

# Think New Build, think Worcester.

SAP Guide 2017



## Worcester, Bosch Group – the perfect partner

Here at Worcester, Bosch Group, we are committed to the design and manufacture of highly efficient heating and hot water technologies for a wide variety of residential and commercial applications.

Worcester has been manufacturing efficient, innovative heating and hot water solutions since 1962. The company employs more than 1,500 people, including a network of over 300 service engineers and 30 dedicated specification sales team members.

We are currently manufacturing in the region of 450,000 boilers a year across our sites including Worcester and Clay Cross.

From our established award-winning Greenstar range of gas and oil-fired boilers, to our portfolio of renewable heating and hot water technologies, we have invested heavily in the development of complete system solutions to meet the users need for comfort, performance and quality.

Our expertise also extends to the support we can offer to those tasked with the specification, installation, and maintenance of domestic heating and hot water technologies. Thanks to our experienced field support team, engineering services department, and training initiatives, we have a wealth of industry expertise on offer to help improve home efficiency levels in the domestic sector.

As debate surrounding the use of energy in domestic buildings continues to give us plenty to consider, Worcester is extremely well placed to offer you the products and support you need – no matter what your requirements.

**Paul Soper**  
**National Specification Director**  
**Worcester, Bosch Group.**



By Appointment to  
Her Majesty The Queen  
Boiler Manufacturer  
Worcester, Bosch Group  
T/A Bosch Thermotechnology Ltd.  
Worcester

## Book a factory visit at Worcester

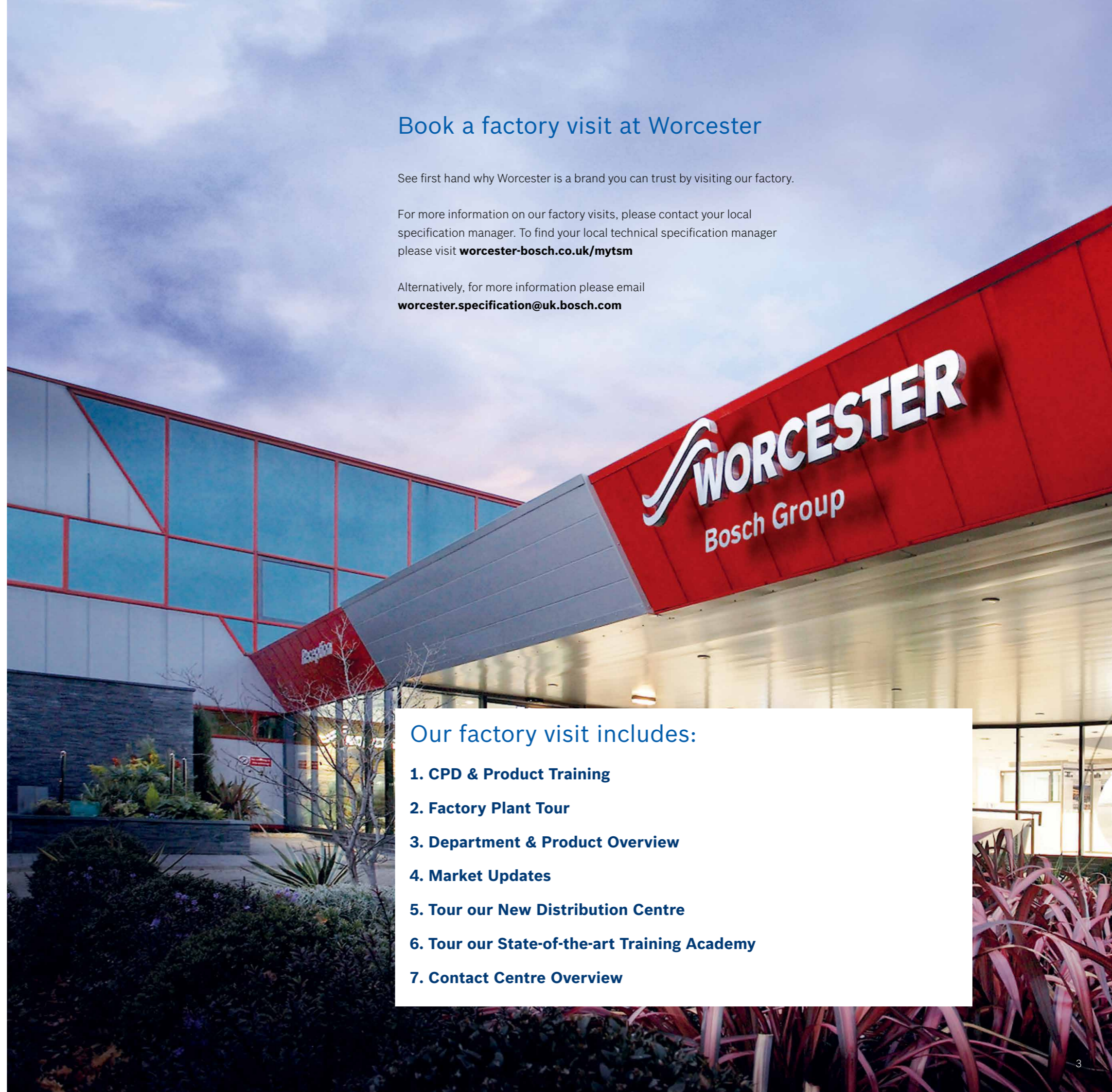
See first hand why Worcester is a brand you can trust by visiting our factory.

For more information on our factory visits, please contact your local specification manager. To find your local technical specification manager please visit [worcester-bosch.co.uk/mytsm](http://worcester-bosch.co.uk/mytsm)

Alternatively, for more information please email [worcester.specification@uk.bosch.com](mailto:worcester.specification@uk.bosch.com)

### Our factory visit includes:

1. CPD & Product Training
2. Factory Plant Tour
3. Department & Product Overview
4. Market Updates
5. Tour our New Distribution Centre
6. Tour our State-of-the-art Training Academy
7. Contact Centre Overview



## Natural Gas – Greenstar boiler range SAP information

Greenstar boiler model	Boiler type (as per PCDB)	PCDB index number	SAP 2009/2012			Compatible with solar pre-heated water?	Comparative hot water efficiency
			Annual $\eta$	SAP Winter $\eta$	SAP Summer $\eta$		
Greenstar 29CDi Classic ErP	Combi	17556	89.1	90	86.7	N	71.2
Greenstar 34CDi Classic ErP	Combi	17558	89.1	90	86.7	N	72.3
Greenstar 38CDi Classic ErP	Combi	17560	89	89.9	86.7	N	71.5
Greenstar 42CDi Classic ErP	Combi	17562	89	89.9	86.7	N	72
Greenstar 28CDi Compact ErP	Combi	17511	89.8	90.7	87	Y	74.9
Greenstar 32CDi Compact ErP	Combi	17513	89.8	90.7	87	Y	75
Greenstar 36CDi Compact ErP	Combi	17515	89.8	90.7	87	Y	74.7
Greenstar 25Si Compact ErP	Combi	17501	89.8	90.7	87	N	74.7
Greenstar 30Si Compact ErP	Combi	17503	89.8	90.7	87	N	74.2
Greenstar 25i ErP	Combi	17505	89.6	90.5	86.6	N	73.2
Greenstar 30i ErP	Combi	17507	89.6	90.5	86.6	N	72.1
Greenstar Highflow 440CDi ErP	Combi	17576	89.2	90	80.9	N	61.7
Greenstar Highflow 550CDi ErP	Combi	17578	89.2	90	80.9	N	61.7
Greenstar 30CDi Classic System ErP	Regular	17568	89.2	90.2	79.5	N	58.1
Greenstar 35CDi Classic System ErP	Regular	17570	89.2	90.2	79.5	N	58.1
Greenstar 9i System ErP	Regular	17479	89.8	90.8	80.1	N	58.5
Greenstar 12i System ErP	Regular	17481	89.8	90.8	80.1	N	58.5
Greenstar 15i System ErP	Regular	17483	89.7	90.7	80	N	58.4
Greenstar 18i System ErP	Regular	17485	89.7	90.7	80	N	58.4
Greenstar 21i System ErP	Regular	17487	89.7	90.7	80	N	58.4
Greenstar 24i System ErP	Regular	17489	89.7	90.7	80	N	58.4
Greenstar 27i System ErP	Regular	17491	89	90	79.3	N	57.9
Greenstar 30i System ErP	Regular	17493	89	90	79.3	N	57.9

Compatible with FGHR? Y/N	FGHR details (Name & PCDB index no.)	Compatible with weather compensation? Y/N	Weather compensation controller details (Name & PCDB index no.)	Compatible with enhanced load compensation? Y/N	Enhanced load compensation controller details (Name & PCDB index no.)	ErP NOx emissions (mg/kWh)
N	–	Y	Wave (200006)	Y	Comfort I (200007), Comfort II (200008)	30
N	–	Y	Wave (200006)	Y	Comfort I (200007), Comfort II (200008)	30
N	–	Y	Wave (200006)	Y	Comfort I (200007), Comfort II (200008)	20
N	–	Y	Wave (200006)	Y	Comfort I (200007), Comfort II (200008)	20
Y	Separate (Greenstar Xtra 060035)	Y	Wave (200006), Weather sensor (200026)	Y	Comfort I (200007), Comfort II (200008)	25
Y	Separate (Greenstar Xtra 060035)	Y	Wave (200006), Weather sensor (200026)	Y	Comfort I (200007), Comfort II (200008)	25
Y	Separate (Greenstar Xtra 060035)	Y	Wave (200006), Weather sensor (200026)	Y	Comfort I (200007), Comfort II (200008)	25
Y	Separate (Greenstar Xtra 060035)	Y	Wave (200006), Weather sensor (200026)	Y	Comfort I (200007), Comfort II (200008)	25
Y	Separate (Greenstar Xtra 060035)	Y	Wave (200006), Weather sensor (200026)	Y	Comfort I (200007), Comfort II (200008)	25
N	Separate (Greenstar Xtra 060035)	Y	Wave (200006), Weather sensor (200026)	Y	Comfort I (200007), Comfort II (200008)	44
N	Separate (Greenstar Xtra 060035)	Y	Wave (200006), Weather sensor (200026)	Y	Comfort I (200007), Comfort II (200008)	44
N	–	Y	Wave (200006)	Y	Comfort I (200007), Comfort II (200008)	23
N	–	Y	Wave (200006)	Y	Comfort I (200007), Comfort II (200008)	23
N	–	Y	Wave (200006)	Y	Comfort I (200007), Comfort II (200008)	30
N	–	Y	Wave (200006)	Y	Comfort I (200007), Comfort II (200008)	30
N	–	Y	Wave (200006), Weather sensor (200026)	Y	Comfort I (200007), Comfort II (200008)	32
N	–	Y	Wave (200006), Weather sensor (200026)	Y	Comfort I (200007), Comfort II (200008)	41
N	–	Y	Wave (200006), Weather sensor (200026)	Y	Comfort I (200007), Comfort II (200008)	38
N	–	Y	Wave (200006), Weather sensor (200026)	Y	Comfort I (200007), Comfort II (200008)	45
N	–	Y	Wave (200006), Weather sensor (200026)	Y	Comfort I (200007), Comfort II (200008)	44
N	–	Y	Wave (200006), Weather sensor (200026)	Y	Comfort I (200007), Comfort II (200008)	44
N	–	Y	Wave (200006), Weather sensor (200026)	Y	Comfort I (200007), Comfort II (200008)	32
N	–	Y	Wave (200006), Weather sensor (200026)	Y	Comfort I (200007), Comfort II (200008)	32

The Wave, Comfort and Weather Sensor controls are compatible with System boilers when the optional internal diverter valve kit is used.

## Natural Gas – Greenstar boiler range SAP information (continued)

Greenstar boiler model	Boiler type (as per PCDB)	PCDB index number	SAP 2009/2012			Compatible with solar pre-heated water?	Comparative hot water efficiency
			Annual $\eta$	SAP Winter $\eta$	SAP Summer $\eta$		
Greenstar 30CDi Classic Regular ErP	Regular	17564	89.2	90.2	79.5	N	58.1
Greenstar 40CDi Classic Regular ErP	Regular	17566	89.2	90.2	79.5	N	58.1
Greenstar 12Ri ErP	Regular	17546	88.8	89.8	79.1	N	57.8
Greenstar 15Ri ErP	Regular	17548	88.8	89.8	79.1	N	57.8
Greenstar 18Ri ErP	Regular	17550	88.8	89.8	79.1	N	57.8
Greenstar 24Ri ErP	Regular	17553	89.2	90.2	79.5	N	58.1
Greenstar 27Ri ErP	Regular	17496	89	90	79.3	N	57.9
Greenstar 30Ri ErP	Regular	17498	89	90	79.3	N	57.9
Greenstar FS 30CDi Regular ErP	Regular	17572	88.9	89.9	79.2	N	57.9
Greenstar FS 42CDi Regular ErP	Regular	17574	88.8	89.8	79.1	N	57.8

\*Compatible when the optional Greenstar Wiring Centre is used.

Compatible with FGHR? Y/N	FGHR details (Name & PCDB index no.)	Compatible with weather compensation? Y/N	Weather compensation controller details (Name & PCDB index no.)	Compatible with enhanced load compensation? Y/N	Enhanced load compensation controller details (Name & PCDB index no.)	ErP NOx emissions (mg/kWh)
N	–	N	–	N	–	30
N	–	N	–	N	–	29
N	–	N	–	N	–	35
N	–	N	–	N	–	54
N	–	N	–	N	–	76
N	–	N	–	N	–	59
N	–	N	–	Y*	Comfort I (200007), Comfort II (200008)	32
N	–	N	–	Y*	Comfort I (200007), Comfort II (200008)	32
N	–	N	–	N	–	23
N	–	N	–	N	–	57



## LPG – Greenstar boiler range SAP information

Greenstar boiler model	Boiler type (as per PCDB)	PCDB index number	SAP 2009/2012			Compatible with solar pre-heated water?	Comparative hot water efficiency
			Annual $\eta$	SAP Winter $\eta$	SAP Summer $\eta$		
Greenstar 9i System ErP LPG	Regular	017475	89.8	90.8	80.1	Y	58.5
Greenstar 12i System ErP LPG	Regular	017480	89.8	90.8	80.1	Y	58.5
Greenstar 15i System ErP LPG	Regular	017482	89.1	90.1	79.4	Y	58
Greenstar 18i System ErP LPG	Regular	017484	89.1	90.1	79.4	Y	58
Greenstar 21i System ErP LPG	Regular	017486	89.1	90.1	79.4	Y	58
Greenstar 24i System ErP LPG	Regular	017488	89.1	90.1	79.4	Y	58
Greenstar 27i System Compact ErP LPG	Regular	017490	89.9	90.9	80.2	Y	58.6
Greenstar 30i System Compact ErP LPG	Regular	017492	89.9	90.9	80.2	Y	58.6
Greenstar 27Ri Compact ErP LPG	Regular	017495	89.9	90.9	80.2	Y	58.6
Greenstar 30Ri Compact ErP LPG	Regular	017497	89.9	90.9	80.2	Y	58.6
Greenstar 12Ri ErP LPG	Regular	017545	89	90	79.3	Y	57.9
Greenstar 15Ri ErP LPG	Regular	017547	89.1	90.1	79.4	Y	58
Greenstar 18Ri ErP LPG	Regular	017549	89.2	90.2	79.5	Y	58.1
Greenstar 24Ri ErP LPG	Regular	017551	88.9	89.9	79.2	Y	57.9
Greenstar 30CDi Classic Regular ErP LPG	Regular	017563	90.2	91.2	80.5	Y	58.8
Greenstar 40CDi Classic Regular ErP LPG	Regular	017565	90.2	91.2	80.5	Y	58.8
Greenstar 30CDi Classic System ErP LPG	Regular	017567	90.2	91.2	80.5	Y	58.8
Greenstar 35CDi Classic System ErP LPG	Regular	017569	90.2	91.2	80.5	Y	58.8
Greenstar 25i ErP LPG	Combi	017504	89.1	90	88.6	N	71.1
Greenstar 30i ErP LPG	Combi	017506	89.1	90	88.6	N	69.7
Greenstar 25Si Compact ErP LPG	Combi	017500	90.4	91.3	88.8	N	75.8
Greenstar 30Si Compact ErP LPG	Combi	017502	90.4	91.3	88.8	N	75.2
Greenstar 28CDi Compact ErP LPG	Combi	017510	90.4	91.3	88.8	Y	74.8

Compatible with FGHR? Y/N	FGHR details (Name & PCDB index no.)	Compatible with weather compensation? Y/N	Weather compensation controller details (Name & PCDB index no.)	Compatible with enhanced load compensation? Y/N	Enhanced load compensation controller details (Name & PCDB index no.)	ErP NOx emissions (mg/kWh)
N	-	Y	Wave (200006), Weather sensor (200026)	Y	Comfort I (200007), Comfort II (200008)	32
N	-	Y	Wave (200006), Weather sensor (200026)	Y	Comfort I (200007), Comfort II (200008)	41
N	-	Y	Wave (200006), Weather sensor (200026)	Y	Comfort I (200007), Comfort II (200008)	38
N	-	Y	Wave (200006), Weather sensor (200026)	Y	Comfort I (200007), Comfort II (200008)	45
N	-	Y	Wave (200006), Weather sensor (200026)	Y	Comfort I (200007), Comfort II (200008)	44
N	-	Y	Wave (200006), Weather sensor (200026)	Y	Comfort I (200007), Comfort II (200008)	44
N	-	Y	Wave (200006)	Y	Comfort I (200007), Comfort II (200008)	32
N	-	Y	Wave (200006)	Y	Comfort I (200007), Comfort II (200008)	32
N	-	N		Y	Comfort I (200007), Comfort II (200008)	32
N	-	N		Y	Comfort I (200007), Comfort II (200008)	32
N	-	N		N		35
N	-	N		N		54
N	-	N		N		76
N	-	N		N		59
N	-	N		N		30
N	-	N		N		29
N	-	Y	Wave (200006)	Y	Comfort I (200007), Comfort II (200008)	30
N	-	Y	Wave (200006)	Y	Comfort I (200007), Comfort II (200008)	30
Y	Separate (Xtra 060036)	Y	Wave (200006), Weather sensor (200026)	Y	Comfort I (200007), Comfort II (200008)	44
Y	Separate (Xtra 060036)	Y	Wave (200006), Weather sensor (200026)	Y	Comfort I (200007), Comfort II (200008)	44
Y	Separate (Xtra 060036)	Y	Wave (200006)	Y	Comfort I (200007), Comfort II (200008)	25
Y	Separate (Xtra 060036)	Y	Wave (200006)	Y	Comfort I (200007), Comfort II (200008)	25
Y	Separate (Xtra 060036)	Y	Wave (200006)	Y	Comfort I (200007), Comfort II (200008)	25

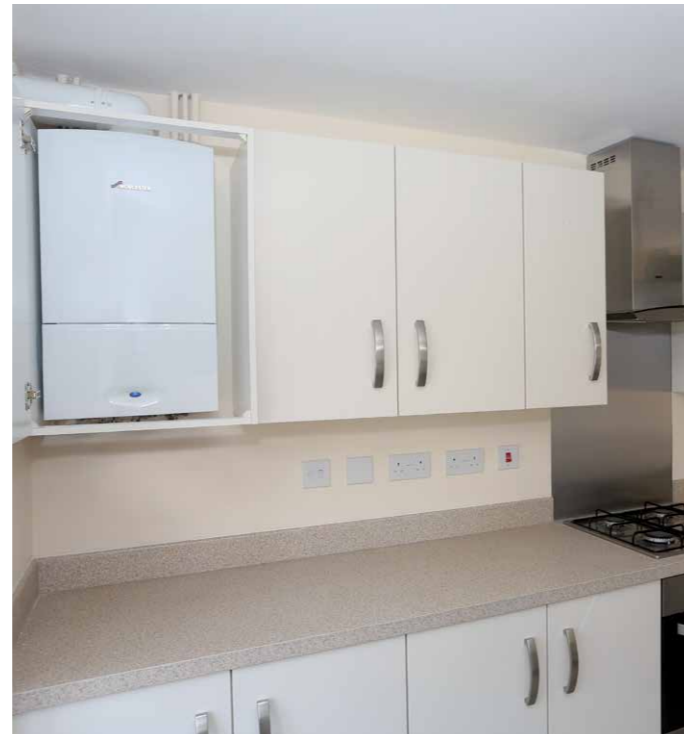
The Wave, Comfort and Weather Sensor controls are compatible with System boilers when the optional internal diverter valve kit is used.

## LPG – Greenstar boiler range SAP information (continued)

Greenstar boiler model	Boiler type (as per PCDB)	PCDB index number	SAP 2009/2012			Compatible with solar pre-heated water?	Comparative hot water efficiency
			Annual $\eta$	SAP Winter $\eta$	SAP Summer $\eta$		
Greenstar 32CDi Compact ErP LPG	Combi	017512	90.4	91.3	88.8	Y	73.7
Greenstar 36CDi Compact ErP LPG	Combi	017514	90.4	91.3	88.8	Y	73.4
Greenstar 29CDi Classic ErP LPG	Combi	017554	90.1	91	80.9	N	63.2
Greenstar 34CDi Classic ErP LPG	Combi	017557	90.1	91	80.9	N	63.2
Greenstar 38CDi Classic ErP LPG	Combi	017559	90	90.9	80.8	N	63.1
Greenstar 42CDi Classic ErP LPG	Combi	017561	90	90.9	80.8	N	63.1

\*Compatible when the optional Greenstar Wiring Centre is used.

Compatible with FGHR? Y/N	FGHR details (Name & PCDB index no.)	Compatible with weather compensation? Y/N	Weather compensation controller details (Name & PCDB index no.)	Compatible with enhanced load compensation? Y/N	Enhanced load compensation controller details (Name & PCDB index no.)	ErP NOx emissions (mg/kWh)
Y	Separate (Xtra 060036)	Y	Wave (200006)	Y	Comfort I (200007), Comfort II (200008)	25
Y	Separate (Xtra 060036)	Y	Wave (200006)	Y	Comfort I (200007), Comfort II (200008)	25
N	-	Y	Wave (200006)	Y	Comfort I (200007), Comfort II (200008)	30
N	-	Y	Wave (200006)	Y	Comfort I (200007), Comfort II (200008)	30
N	-	Y	Wave (200006)	Y	Comfort I (200007), Comfort II (200008)	20
N	-	Y	Wave (200006)	Y	Comfort I (200007), Comfort II (200008)	20



## Oil – Greenstar boiler range SAP information

Greenstar boiler model	Boiler type (as per PCDB)	PCDB index number	SAP 2009/2012			Compatible with solar pre-heated water?	Comparative hot water efficiency
			Annual $\eta$	SAP Winter $\eta$	SAP Summer $\eta$		
Greenstar Heatslave II 12/18 ErP	Combi	17519	89.4	90.3	82.2	Y	61.8
Greenstar Heatslave II 18/25 ErP	Combi	17520	89.2	90.1	82	Y	61.6
Greenstar Heatslave II 25/32 ErP	Combi	17521	89	89.9	81.8	Y	61.5
Greenstar Heatslave II External 12/18 ErP	Combi	17516	89.4	90.3	82.2	Y	61.8
Greenstar Heatslave II External 18/25 ErP	Combi	17517	89.2	90.1	82	Y	61.6
Greenstar Heatslave II External 25/32 ErP	Combi	17518	89	89.9	81.8	Y	61.5
Greenstar Danesmoor System 12/18 ErP	Regular	17532	91.1	92.2	80.5	N	58.8
Greenstar Danesmoor System 18/25 ErP	Regular	17533	90.9	92	80.3	N	58.7
Greenstar Danesmoor System 25/32 ErP	Regular	17534	90.7	91.8	80.1	N	58.5
Greenstar Danesmoor System Utility 12/18 ErP	Regular	17538	91.1	92.2	80.5	N	58.8
Greenstar Danesmoor System Utility 18/25 ErP	Regular	17539	90.9	92	80.3	N	58.7
Greenstar Danesmoor System Utility 25/32 ErP	Regular	17540	90.7	91.8	80.1	N	58.5
Greenstar Danesmoor System External 12/18 ErP	Regular	17535	91.1	92.2	80.5	N	58.8
Greenstar Danesmoor System External 18/25 ErP	Regular	17536	90.9	92	80.3	N	58.7
Greenstar Danesmoor System External 25/32 ErP	Regular	17537	90.7	91.8	80.1	N	58.5

Compatible with FGHR? Y/N	FGHR details (Name & PCDB index no.)	Compatible with weather compensation? Y/N	Weather compensation controller details (Name & PCDB index no.)	Compatible with enhanced load compensation? Y/N	Enhanced load compensation controller details (Name & PCDB index no.)	ErP NOx emissions (mg/kWh)
N	-	Y	Weather sensor 200027	Y	Comfort I (200009), Comfort II (200010)	243
N	-	Y	Weather sensor 200027	Y	Comfort I (200009), Comfort II (200010)	193
N	-	Y	Weather sensor 200027	Y	Comfort I (200009), Comfort II (200010)	136
N	-	Y	Weather sensor 200027	Y	Comfort I (200009), Comfort II (200010)	243
N	-	Y	Weather sensor 200027	Y	Comfort I (200009), Comfort II (200010)	193
N	-	Y	Weather sensor 200027	Y	Comfort I (200009), Comfort II (200010)	136
N	-	N	-	N	-	243
N	-	N	-	N	-	193
N	-	N	-	N	-	136
N	-	N	-	N	-	243
N	-	N	-	N	-	193
N	-	N	-	N	-	136
N	-	N	-	N	-	243
N	-	N	-	N	-	193
N	-	N	-	N	-	136



## Oil – Greenstar boiler range SAP information (continued)

Greenstar boiler model	Boiler type (as per PCDB)	PCDB index number	SAP 2009/2012			Compatible with solar pre-heated water?	Comparative hot water efficiency
			Annual $\eta$	SAP Winter $\eta$	SAP Summer $\eta$		
Greenstar Danesmoor Regular 12/18 ErP	Regular	17522	91.1	92.2	80.5	N	58.8
Greenstar Danesmoor Regular 18/25 ErP	Regular	17524	90.9	92	80.3	N	58.7
Greenstar Danesmoor Regular 25/32 ErP	Regular	17525	90.7	91.8	80.1	N	58.5
Greenstar Danesmoor Utility Regular 12/18 ErP	Regular	17529	91.1	92.2	80.5	N	58.8
Greenstar Danesmoor Utility Regular 18/25 ErP	Regular	17530	90.9	92	80.3	N	58.7
Greenstar Danesmoor Utility Regular 25/32 ErP	Regular	17531	90.7	91.8	80.1	N	58.5
Greenstar Danesmoor External Regular 12/18 ErP	Regular	17526	91.1	92.2	80.5	N	58.8
Greenstar Danesmoor External Regular 18/25 ErP	Regular	17527	90.9	92	80.3	N	58.7
Greenstar Danesmoor External Regular 25/32 ErP	Regular	17528	90.7	91.8	80.1	N	58.5
Greenstar Danesmoor Utility Regular 32/50 ErP	Regular	17541	90.5	91.6	79.9	N	58.4
Greenstar Danesmoor Utility Regular 50/70 ErP	Regular	17542	90.7	91.8	80.1	N	58.5

Compatible with FGHR? Y/N	FGHR details (Name & PCDB index no.)	Compatible with weather compensation? Y/N	Weather compensation controller details (Name & PCDB index no.)	Compatible with enhanced load compensation? Y/N	Enhanced load compensation controller details (Name & PCDB index no.)	ErP NOx emissions (mg/kWh)
N	–	N	–	N	–	243
N	–	N	–	N	–	193
N	–	N	–	N	–	136
N	–	N	–	N	–	243
N	–	N	–	N	–	193
N	–	N	–	N	–	136
N	–	N	–	N	–	243
N	–	N	–	N	–	193
N	–	N	–	N	–	136
N	–	N	–	N	–	130
N	–	N	–	N	–	100

## Greenstore unvented cylinder SAP information

Cylinder model	Cylinder type	Storage loss factor	Cylinder volume	Dedicated solar store volume (litres)
Greenstore SC-90	Unvented	1.008	93	–
Greenstore SC-120	Unvented	1.296	123	–
Greenstore SC-150	Unvented	1.632	161	–
Greenstore SC-180	Unvented	1.824	191	–
Greenstore SC-210	Unvented	1.944	216	–
Greenstore SC-250	Unvented	2.136	246	–
Greenstore SC-300	Unvented	2.304	292	–
Greenstore TC-150	Solar unvented	1.632	158	65
Greenstore TC-180	Solar unvented	1.824	187	65
Greenstore TC-210	Solar unvented	1.944	211	105
Greenstore TC-250	Solar unvented	2.136	241	115
Greenstore TC-300	Solar unvented	2.304	287	115

## Greenskies solar thermal SAP information

Solar panel model	Collector type	Aperture area (m <sup>2</sup> )	Gross area (m <sup>2</sup> )	$\eta_0$ – zero-loss collector efficiency	$a_1$ – linear heat loss coefficient (W/m <sup>2</sup> K)	$a_2$ – second order heat loss coefficient (W/m <sup>2</sup> K <sup>2</sup> )	A/G ratio
Solar-Lifestyle-Portrait	Flat plate, glazed	2.25	2.37	0.766	3.216	0.015	0.95
Solar-Lifestyle-Landscape	Flat plate, glazed	2.25	2.37	0.7702	3.8713	0.0116	0.95
Solar-Lito	Flat plate, glazed	1.936	2.091	0.761	4.083	0.012	0.93

## Global warming potential (GWP)

GWP measures how much a given mass of greenhouse gas is estimated to contribute to global warming. It is a relative scale which compares the gas in question to that of the same mass of carbon dioxide.

All Worcester Greenstore cylinders have a GWP rating of 3.3 (kg CO<sub>2</sub>-Equiv) in accordance with the European Plastics Industry union.



# Useful contacts

The map shows the following regional assignments:

- Scotland:** David Lister (07971 645995)
- Ireland:** Ray McClay (07767 432567)
- North East:** Terry Morgan (07790 489979)
- North West:** Ben Pennington (07812 548026)
- New Build:** Darren Milkins (07767 432540)

[worcester-bosch.co.uk/specifiers](http://worcester-bosch.co.uk/specifiers)



In partnership with



energy saving trust™



**Bosch Group**



Worcester, Bosch Group,  
Cotswold Way, Warndon,  
Worcester, WR4 9SW