

The Worcester Greenstar Heatslave II

Our Greenstar Heatslave II boiler is the UK's most popular oil Combi boiler. This boiler has a sleek, modern design and is suitable for small, medium and large sized homes with one or two bathrooms.

Why install a Greenstar Heatslave II?

- Precise heating and hot water control
- Instantaneous hot water, always available
- Smart modern design with controls concealed in a drawer
- Compatible with a range of optional controls for greater efficiency and comfort
- Eco hot water mode saves energy
- Suitable for kitchen installation - fits underneath a standard kitchen worktop



Which? Best Buy

Every Greenstar oil boiler has been awarded Which? Best Buy status



5 Year Guarantee

Up to 5 years guarantee on all Worcester oil boilers when fitted with a Greenstar System Filter



Royal Warrant

We are honoured to have received a Royal Warrant in recognition of supplying goods to Her Majesty The Queen



BOSCH

Invented for life

Part of the Bosch Group

We have the support and resources associated with being part of one of the world's largest companies



worcester-bosch.co.uk

 **WORCESTER**
Bosch Group

Technical data

Model		Heatslave II 12/18	Heatslave II 18/25	Heatslave II 25/32
Clearances	Above*	300mm (10mm)*	300mm (10mm)*	300mm (10mm)*
	Left	5mm	5mm	5mm
	Right	5mm	5mm	5mm
	Front	600mm	600mm	600mm
Output kW to central heating (CH)		12kW - 18kW	18kW - 25kW	25kW - 32kW
Flow rate at the hot water tap (40°C)		15 l/min	18 l/min	22 l/min
ErP Seasonal space heating energy efficiency class		A / 91%	A / 90%	A / 91%
Optional plug-in timer		✓	✓	✓

*Although clearance above the Heatslave range is stated to be 300mm, a removable worktop may be placed above the boiler, allowing 10mm clearance.

Control options

Comfort



Accessories

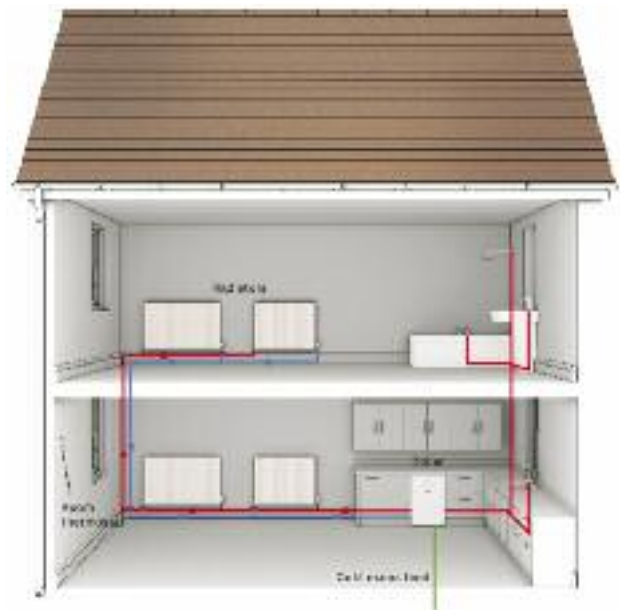
Greenstar System Filter



Install a Greenstar System Filter to protect your heating system from contamination and extend your standard 2 year guarantee to a 5 year guarantee.

Boiler dimensions

The Greenstar Heatslave II will fit under a standard kitchen worktop*.



Know your system

Combination, or 'combi' boilers, heat water directly from the mains when you turn on a tap, so you won't need a hot water storage cylinder or a cold water storage tank.