

Moving Home Guide

Locating the boiler

Most common places you will find your boiler:

- ▶ Airing cupboard
- ▶ Kitchen or utility room
- ▶ Loft space or garage.

The UK's most common boiler is a combi boiler.

[Find out more about other types of boilers](#)

Boiler controls

To ensure your home is comfortable, use the installed boiler control, or take a look at [our range of controls](#).

- ▶ Boiler controls vary.
- ▶ Test your control before it needs to be set.

How old is my boiler?

- ▶ Check the boiler's age by contacting the manufacturer.
- ▶ It might be worth booking a service to check your boiler.

[Check the length of your boiler's guarantee here.](#)

Energy efficiency

- ▶ Your new home needs to be as energy efficient as possible to help reduce your energy bills and be comfortable.
- ▶ An older home might be less energy efficient.
- ▶ You will need to find the perfect temperature for efficiency and comfort.

Energy meters

- ▶ Your energy meters can vary in location.
- ▶ They can be located inside or outside your property.
- ▶ Usually located where the supply to your property is.

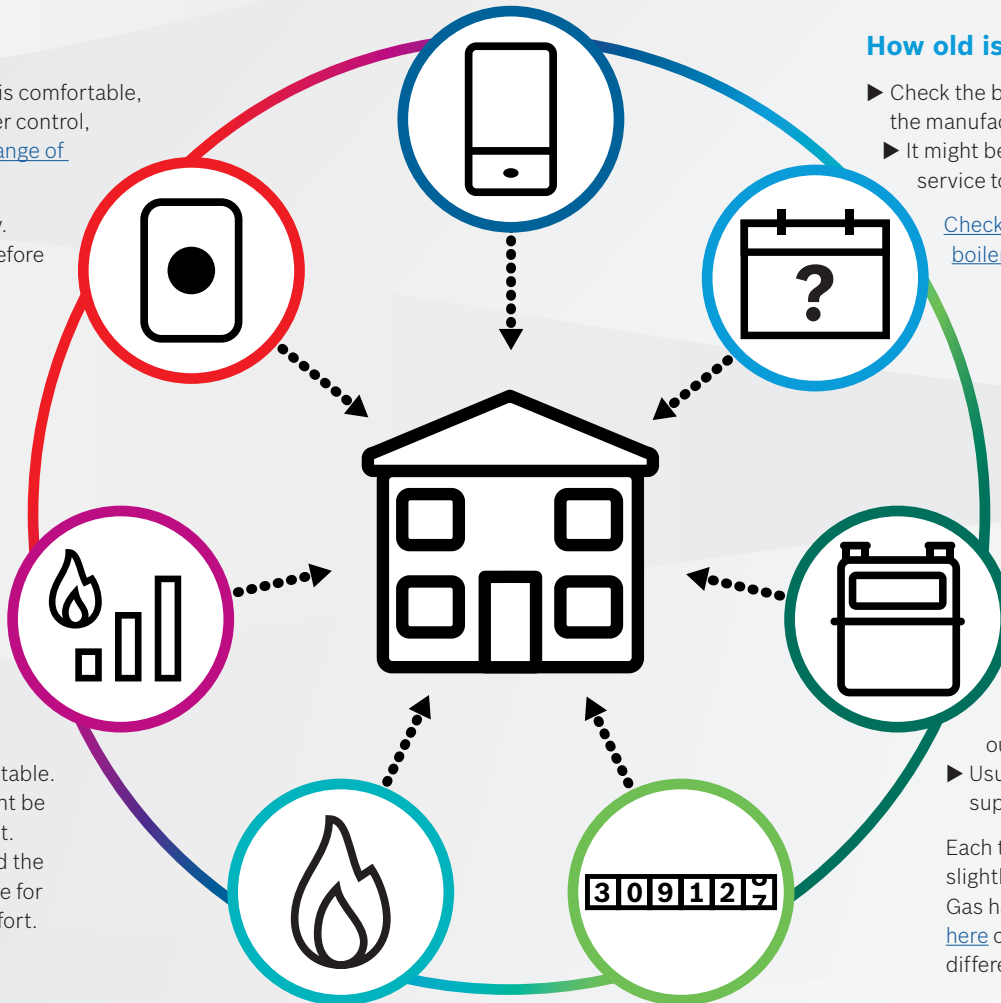
Each type of meter is read slightly differently, British Gas have provided a [guide here](#) on how to read the different types.

Energy suppliers

- ▶ Identify who your current energy supplier is.
- ▶ Provide them with new meter readings.
- ▶ It is worth exploring other energy providers to see which can provide you with the best tariffs for your needs.

Meter readings

- ▶ It is important to locate your meters and take readings once you move in.
- ▶ Once you have your readings, you should inform your energy supplier, so they can start billing you accurately.



Moving Home Checklist

Make moving home a little easier with our essential checklist...



Stopcock

The stopcock is for turning off and on the cold water system in your home. Stopcocks are usually found in your kitchen, below or beside the sink unit. However in some houses the stopcock is found in the front or back hall.



Fuse box

The fuse box is important in case you lose power. Fuse boxes are usually located in the garage, a storage room, basement or hallway.



Gas and electricity meter

They can be located inside or outside your property, but are usually located where the input to your property is.



Water meter

The majority of water meters are usually fitted near your outside stop tap. It will be under a small metal or plastic cover in your driveway, garden or nearby footpath. If your meter is indoors it can usually be found under the kitchen sink by your inside stop tap.



Test detectors

Make sure you test the smoke alarm, as well as the carbon monoxide detector(s) to see if they are in working order. If not you might have to replace batteries, or fit new detectors.



Changes of address

Once you have moved it is important to inform organisations of your move as some documents might need to reflect your new address. These include, but not limited to:

▶ Driving licence ▶ Bank account ▶ Post office ▶ Insurance ▶ Energy providers.



Bin collection

Check the local council website for bin collection days, to make sure you don't end up with lots of rubbish. It is also worth checking where your local tip is to dispose of larger packaging. In certain areas, or if you have moved into a new house you might need to order your bins which can take a couple of weeks.



Warranties & guarantees

When moving into your new home you might have bought new appliances, or have current appliances installed in your home. Make sure you register all of your new products, as well checking how long is left on your current appliances.



Council Tax

It is important to inform your local council that you have moved in, so they register you as the new owner and set up new payment details.



BOSCH