



**A boiler brand  
you can trust**



A boiler is at the heart of the home...



By Appointment to  
Her Majesty The Queen  
Boiler Manufacturer  
Worcester, Bosch Group  
T/A Bosch Thermotechnology Ltd.  
Worcester

## ...Discover more with Worcester Bosch

This brochure will help you make all the right choices for comfort and warmth to reliably meet your needs both now and into the future.

Why choose Worcester Bosch?	4-7
The key facts about heating and hot water	8-9
Which heating and hot water system is best for your lifestyle	10-15
Greenstar combi boilers	16-19
Greenstar system boilers	20-23
Greenstar regular boilers	24-27
Boiler controls explained	28-31
Worcester Bosch controls range	32-35
Greenstore hot water storage	36-37
The importance of system filtration	38-39
Preventing frozen condensate pipework	40-41
How to get a Worcester Bosch boiler installed in your home	42-47
Worcester Bosch – supporting you from the start	48-49
Other products from Bosch for your home and garden	50-51
Comparison tables and technical information	52-53



## Why should Worcester Bosch be your next boiler choice?

Worcester Bosch is the choice for millions of quality and value focused homeowners. In a recent customer satisfaction survey it has been revealed that we are also the choice of professional tradesmen too, with 9 out of 10 heating engineers choosing Worcester Bosch to provide warmth and hot water for their homes and families.



### WHICH? Best Buy

Awarded Which? Best Buy for 9 years running.



### 50 years and counting

Our customers have consistently rated us 5 stars on Trustpilot.co.uk



### Peace of mind guaranteed

Every Greenstar boiler is guaranteed for up to 10 years\*.



### UK based and proud

Dedicated manufacturing plants in Worcester and Clay Cross, Derbyshire.



### Part of the Bosch Group

All Worcester products are manufactured with Bosch levels of quality and reliability as standard.



### Royal Warrant

We are honoured to have received a Royal Warrant in recognition of supplying goods to Her Majesty The Queen.



A percentage of the profits made by Worcester Bosch is donated to charities and good causes by the Robert Bosch Foundation, a non-profit charitable trust which owns 92% of the Bosch Group.



# A boiler brand you can trust



In the Which? October 2018 Survey our entire range of boilers came out top for the 9th year running. Scoring top marks for reliability and customer satisfaction.

Our boilers also received a five-star recommendation score from Which? Trusted Traders heating engineers, who say:

**“Its reliability is excellent. The customer service and culture is first class and their technical helpline is brilliant. It also has fantastic quality of build.”\***

Homeowners also highly recommend our boilers with Which?, commenting:

**“Worcester Bosch is the best boiler brand out there, based on the results of our latest survey. Its boilers are well loved by those who own them.”\***



Rated **9.1** out of 10  
Based on **7,324** reviews\*

## Online reviews

Further endorsements of our boilers can be found on a variety of online review sites including Trustpilot where we have a 5 star rating from over 7,324 independent customers.

\*As of 19th September 2018.



“Consistent chart topper. Very reliable, delights customers, backed by engineers who praise its build quality.”†



†2018/2019 Survey Which?



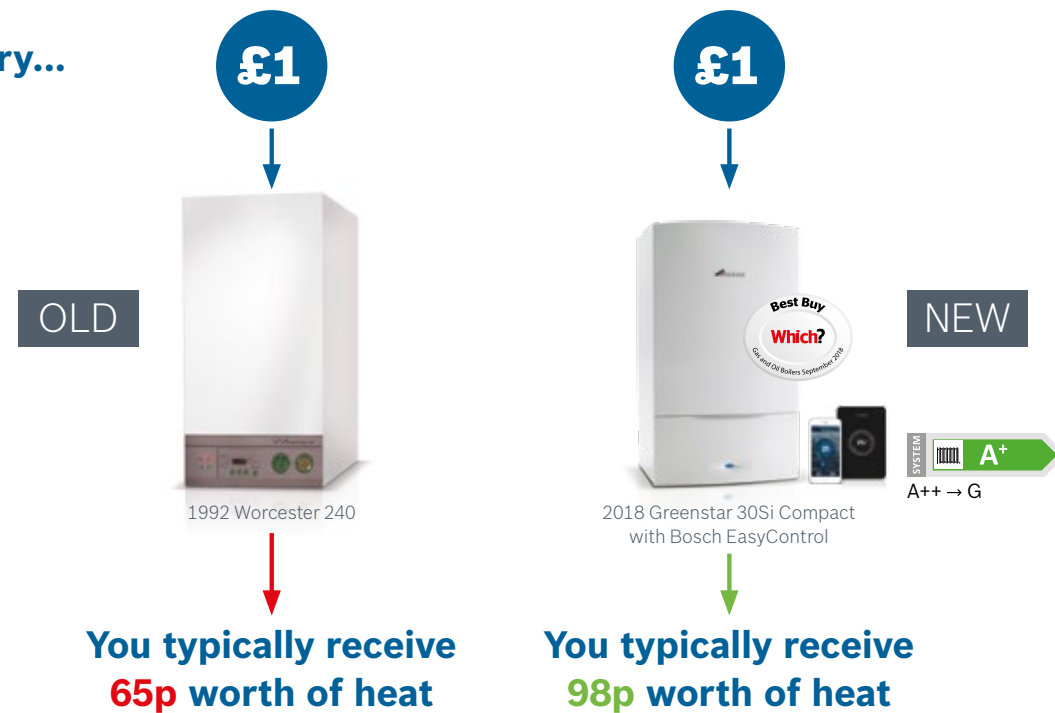
# The key facts about heating and hot water

There's a huge range of boilers on the market, so finding one that perfectly suits your home and lifestyle can be tricky. Another consideration is how you use your heating and hot water and if it might change, such as if your family is growing. In every case, we recommend talking to an expert installer.

## A leap in efficiency

- ▶ Boilers account for about 60%\* of a household's annual energy costs, so have a big effect on fuel bills.
- ▶ With older gas boilers, a considerable amount of heat that could be used to generate heating and hot water is wasted, making them increasingly expensive to run.
- ▶ Worcester Bosch boilers are all more than 90% efficient, so over 90p of every £1 you spend on fuel for your boiler is used for your heating and hot water.
- ▶ Adding a Bosch EasyControl internet-connected Smart controller can boost your heating system efficiency to an impressive 98% (also known as A+).

For every...



**Upgrade your heating system and save up to £300 for a year†.**

## Wise choices

A new boiler can be a sizeable investment, so it's important to choose wisely. It makes sense to consider the durability of parts and maintenance costs.

By discussing everything with experts like your Worcester Bosch installer, you'll make certain of the best long-term value for money, giving you financial peace of mind as well as comfort and warmth.

## Smaller carbon footprint

Domestic boilers currently account for 21%\* of the UK's total CO<sub>2</sub> emissions so the greater their efficiency, the more kind they are to the environment.

\* Source: Energy Saving Trust. †Source: Energy Saving Trust. Figure based on installing a new A-rated condensing boiler with a programmer, room thermostat and thermostatic radiator controls (TRVs) in a gas-heated home from an older boiler with a programmer and room thermostat. Savings of up to £305 but can vary depending on the size and thermal performance of your home. Figures are based on fuel prices as of April 2018.

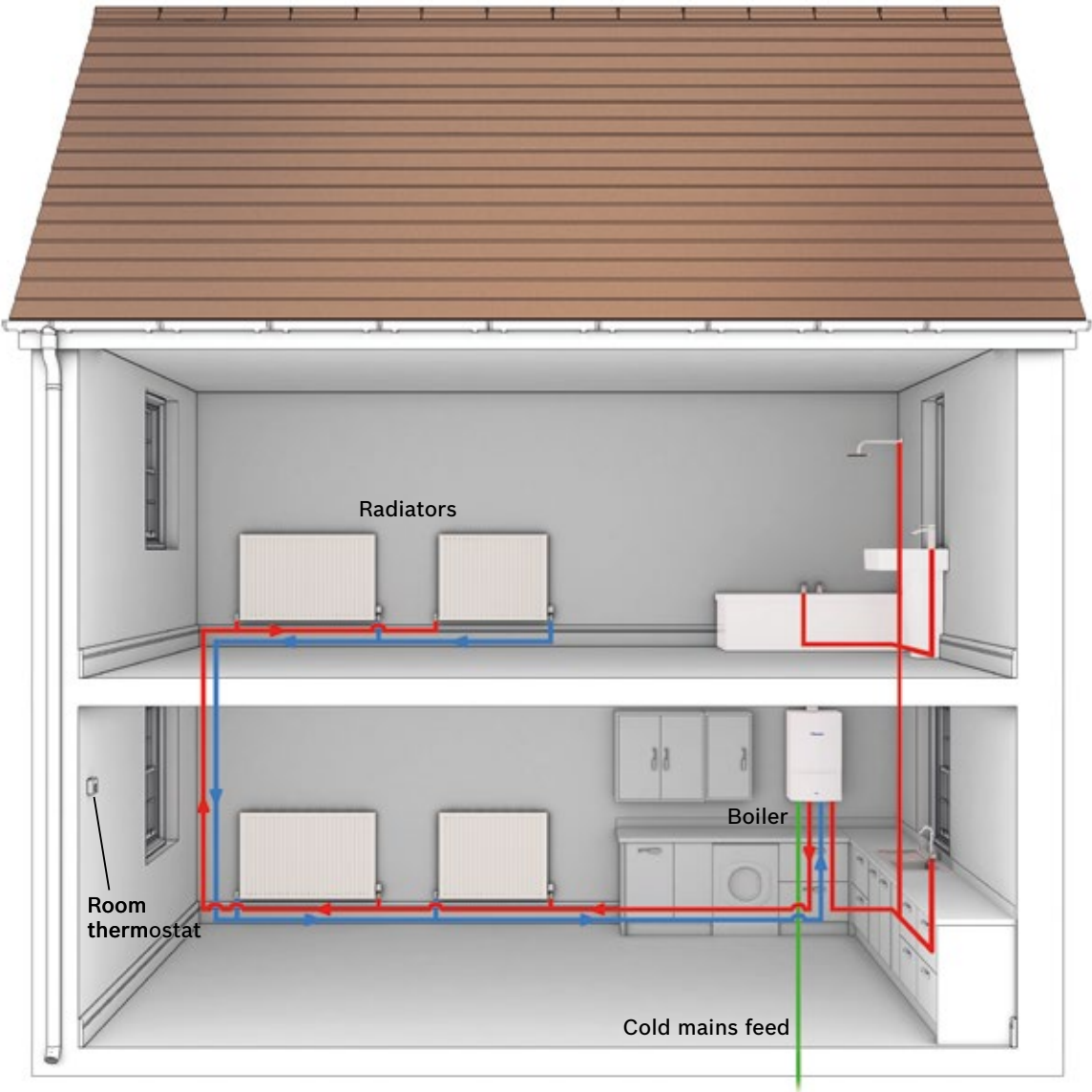






**Which heating and hot water system is best for me and my lifestyle?**





For guidance only.

### Typical combination boiler heating system

A combination or 'combi' boiler is both a high efficiency water heater and a central heating boiler in a single compact unit. Combi boilers heat water directly from the mains when you turn on a tap, so you won't need a hot water storage cylinder or a cold water storage tank in the roof space. They are also very cost-effective and energy-efficient as water is heated instantly rather than being heated and then stored in a cylinder.

An added benefit is that hot water is delivered at mains pressure, which means that you could get a powerful shower without the need for a separate pump.

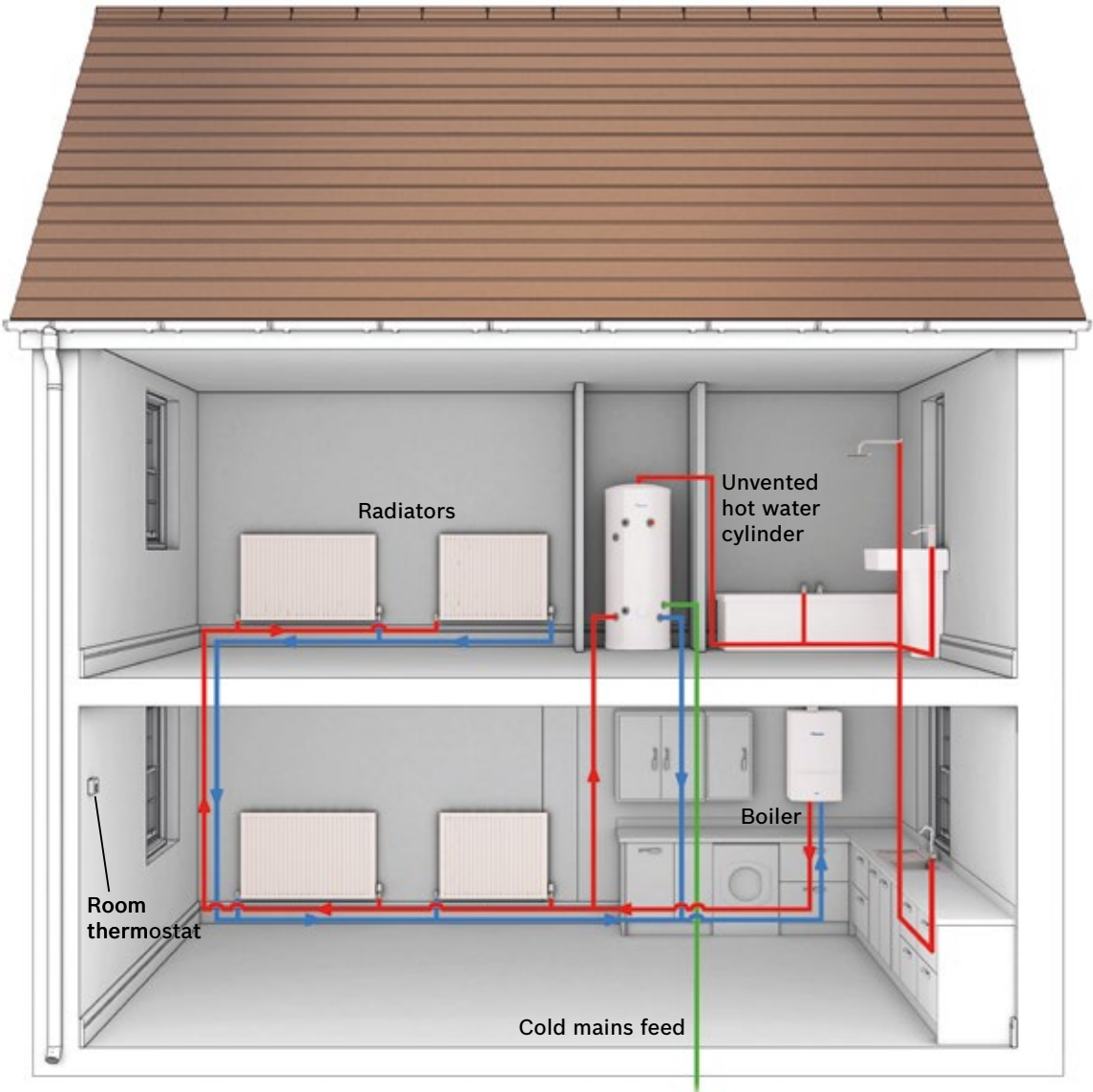
#### Advantages

- ▶ Compact sizes make combi boilers perfect for smaller properties
- ▶ Perfect where there is little or no loft space
- ▶ No need for a hot water cylinder which allows increased living space
- ▶ No cold water storage tank frees up loft space for conversion
- ▶ No risk of loft pipework freezing
- ▶ Less pipework in the home makes installation typically cheaper.

Go to pages 16-19 to see the Greenstar combi range



For more information visit [worcester-bosch.co.uk/BoilersExplained](https://worcester-bosch.co.uk/BoilersExplained)



For guidance only.

### Typical system boiler heating system

System boilers require a cylinder for storing hot water, however the major heating and hot water system components are built into the boiler itself, making it quicker and easier to install.

In addition, there is no need for a tank in the loft, so it can be an option in a home with little or no loft space or where the space is earmarked for a conversion. These boilers are also compatible with solar water heating systems, which deliver environmental benefits as well as lower energy bills.

#### Advantages

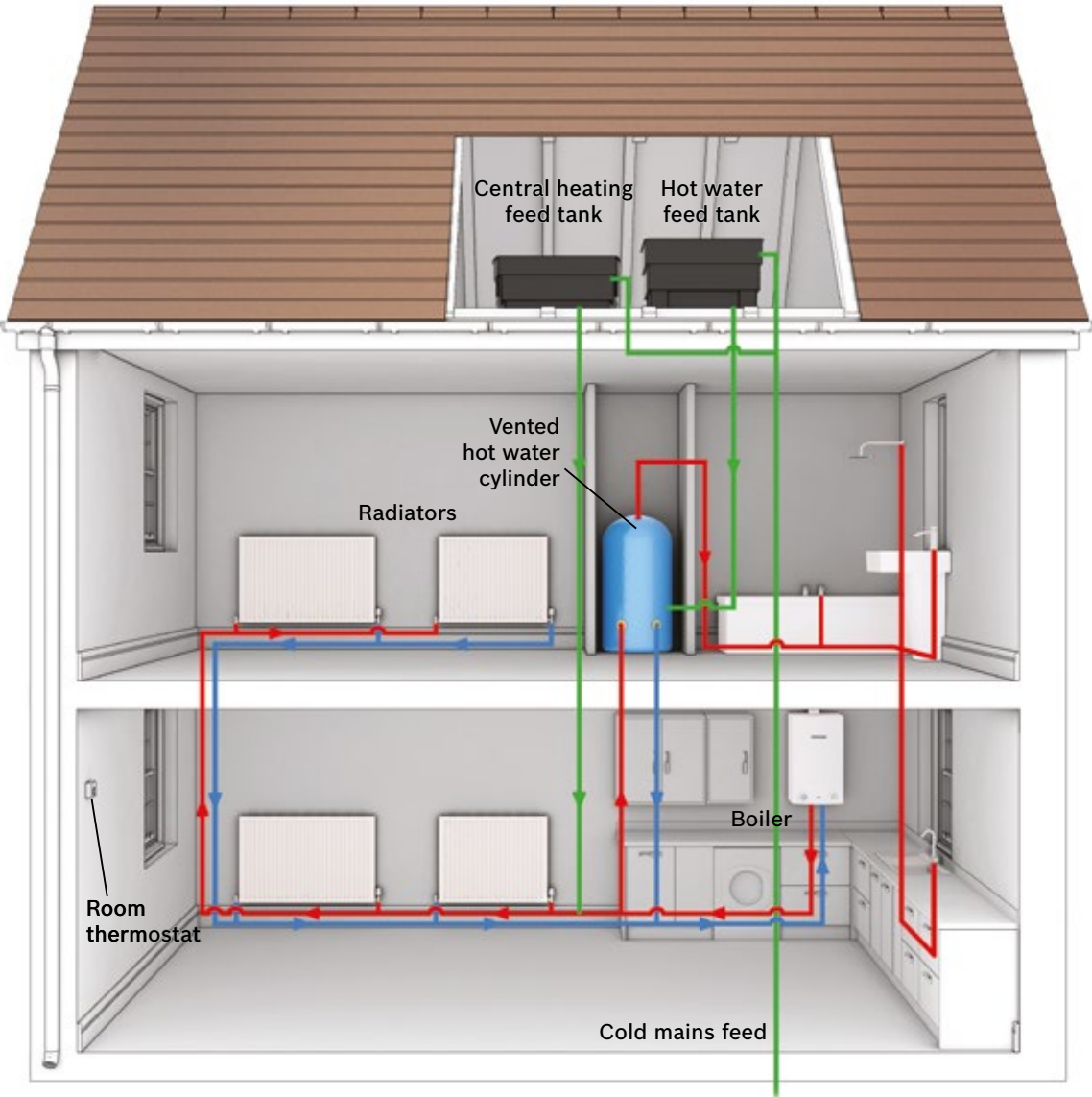
- ▶ Great for homes with more than one bathroom
- ▶ Constant supply of hot water to multiple taps at the same time
- ▶ No need for a loft tank, freeing up space and eliminating worries about leaks or frost damage
- ▶ Economical to run
- ▶ Built-in components makes installation quicker and neater.

Go to pages 20-23 to see the Greenstar system range



For more information visit [worcester-bosch.co.uk/BoilersExplained](https://worcester-bosch.co.uk/BoilersExplained)





For guidance only.

Typical regular boiler heating system

Regular boilers (sometimes known as traditional, conventional or heat only boilers) are ideally suited to homes that already have a traditional heating and hot water system which is linked to a separate hot water cylinder. These boilers also need a cold water storage tank in the loft to feed the hot water cylinder as well as a tank that maintains the water level of the central heating system. A regular boiler may be the best option for replacing an existing boiler if the property has an older radiator system, as it might not be able to cope with the higher water pressure that is delivered by system or combi boilers.

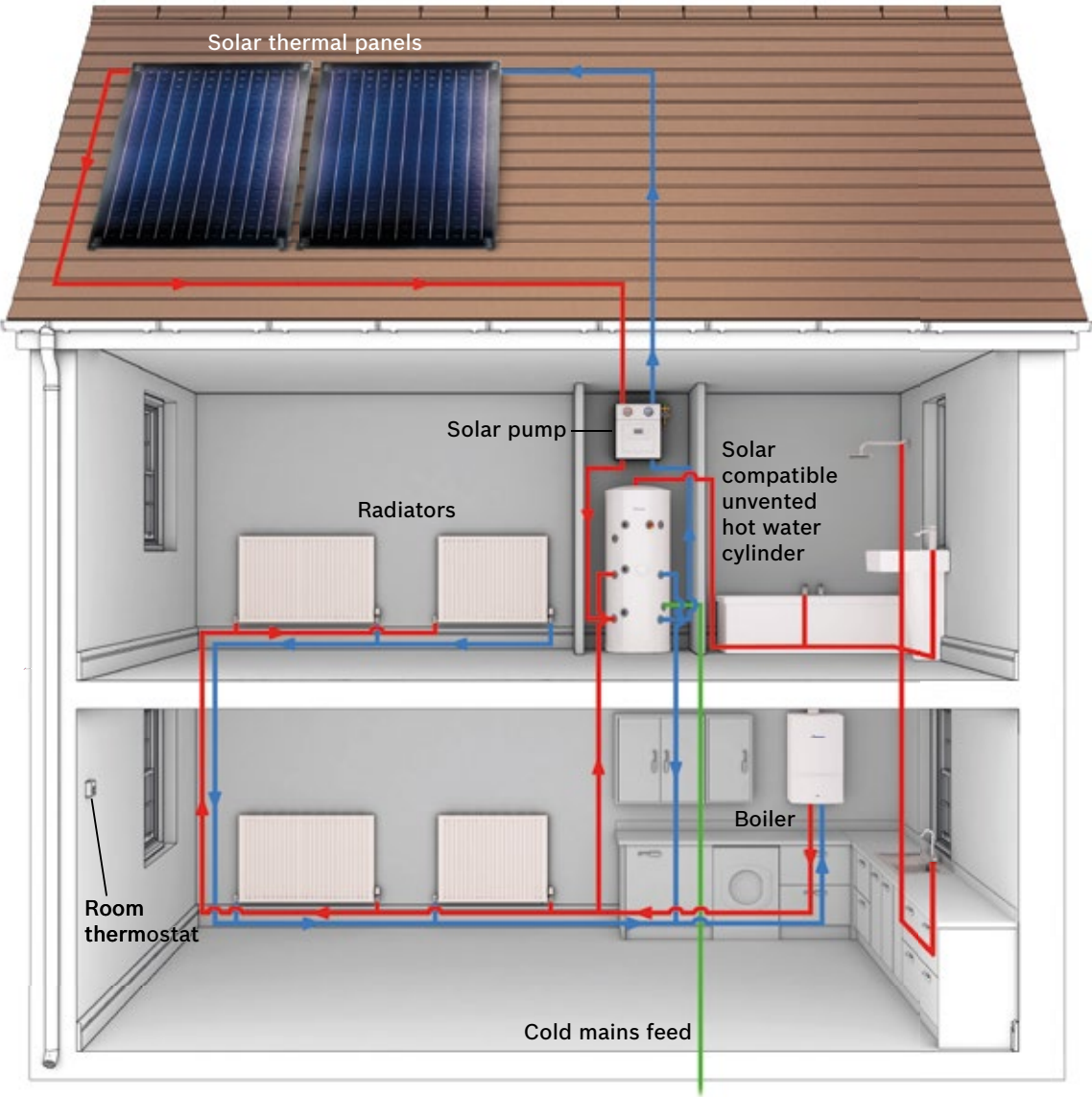
Advantages

- ▶ Perfect for homes where a lot of hot water is used at the same time
- ▶ Great where there are two or more bathrooms
- ▶ A good option in areas where water pressure is low
- ▶ Compatible with solar water heating systems for a lower carbon footprint and lower energy costs.

Go to pages 24-27 to see the Greenstar regular range



For more information visit [worcester-bosch.co.uk/BoilersExplained](https://worcester-bosch.co.uk/BoilersExplained)



For guidance only.

Typical system or regular boiler heating system with solar thermal hot water.

System and regular boilers are perfect partners for Worcester Bosch Greenskies solar hot water systems (also known as solar thermal). In a solar thermal system, the panels harness heat from the sun, which is used to heat the water stored in a solar compatible hot water cylinder. The boiler is linked to the system and automatically starts up if the water in the cylinder falls below the required temperature, ensuring you have all the hot water you need all year round.

Effective even on cloudy days and during shorter winter daylight hours, a solar thermal system will typically meet around 60%\* of your home's hot water needs, which could mean considerable savings on your energy bills as well as dramatically reduced carbon emissions.

Advantages

- ▶ Typically generates 'free' energy for over half of your hot water needs, giving you lower energy bills
- ▶ Particularly beneficial for homes with large families or high hot water usage
- ▶ Works in direct and indirect sunlight so that you also benefit in the winter months and on cloudy days
- ▶ Compatible with all Worcester Bosch regular and system boilers
- ▶ Reduces your carbon footprint.

Go to our website to learn more about solar thermal

\* Source: Energy Saving Trust.

Compact and space saving, combi boilers are very reliable as well as highly energy-efficient making them economical to run.



## Greenstar combi boilers

Combi boilers are the most popular heating and hot water solution in the UK, and they are now the preferred choice for most householders and installers. Worcester Bosch was the pioneer of the combi boiler in the UK, with the Greenstar range developed to suit virtually all homes.

### Energy saving and convenient

All Worcester Bosch Greenstar combis are designed and manufactured to provide high levels of performance and operating efficiency. This is achieved through features such as the 'keep hot' facility which ensures that hot water is almost instantly available whenever it's required.

The boilers also incorporate a special 'ECO' mode button which can be used to over-ride the 'keep hot' facility. This has the bonus of using less gas, as energy is only used when hot water is required.







Greenstar CDi Classic series

Our top of the range Greenstar CDi Classic series are high performance boilers suitable for small, medium and large-sized properties with one or two bathrooms. Known for their exceptional efficiency and reliability, they are wall-mounted and offer the highest levels of hot water comfort.

MODEL	29CDi CLASSIC	34CDi CLASSIC	38CDi CLASSIC	42CDi CLASSIC
Hot water output	30.9kW	35.0kW	40.0kW	42.0kW
Hot water flow rate	12.3 ltr/min	14.3 ltr/min	16.4 ltr/min	17.2 ltr/min

All figures are maximums

- Larger two bathroom properties can be supplied by higher output options
- The CDi Classic has set the industry bench-mark for efficiency, helping to reduce gas bills
- Low energy pump reduces electrical usage
- Frost protection reduces frost risk if installed in a garage or loft
- Wide choice of matching controls.

Greenstar CDi Compact series

The wall-mounted Greenstar CDi Compact series have the smallest dimensions of our combi boilers. They can be installed in a wide range of locations, including inside a standard kitchen cupboard. Despite their small size, high outputs make them suitable for properties with more than one bathroom.

MODEL	28CDi COMPACT	32CDi COMPACT	36CDi COMPACT
Hot water output	28.0kW	32.0kW	36.0kW
Hot water flow rate	11.4 ltr/min	13.1 ltr/min	15.0 ltr/min

All figures are maximums

- User-friendly displays make boiler easy to operate
- Can be installed in a kitchen cupboard
- High efficiency, greater reliability and durability is achieved by the CDi Compact's innovative new heat exchanger
- Wide choice of matching controls enables greater comfort and economy
- Frost protection included as standard.

Greenstar Si Compact series

Greenstar Si Compact series are suitable for small to medium-sized one bathroom homes. They can be wall-mounted in a variety of locations, including a kitchen cupboard, utility room, bathroom, airing cupboard, loft or garage.

MODEL	25Si COMPACT	30Si COMPACT
Hot water output	25.0kW	30.0kW
Hot water flow rate	10.2 ltr/min	12.3 ltr/min

All figures are maximums

- Hot water can be adjusted to fine tune your comfort
- Wide choice of matching controls enables greater comfort and economy
- Frost protection is also included on the Si Compact, reducing frost risk if installed in a garage or loft.

Greenstar i series

The successor to the popular i Junior series which represent 1 in 10 of all boilers installed in the UK. These wall-mounted boilers are ideal for apartments and small to medium-sized properties with one bathroom.

MODEL	25i	30i
Hot water output	25.0kW	30.0kW
Hot water flow rate	10.2 ltr/min	12.3 ltr/min

All figures are maximums

- Hot water can be adjusted to fine tune your comfort
- Wide choice of matching controls
- Simple to use control panel which provides information on the boiler operation and allows the temperature of the water in the radiators and the hot water temperature to be easily adjusted
- Frost protection included as standard.

Greenstar Highflow CDi series

These floor-standing combi boilers have been developed specifically for larger two bathroom properties where there is a need for higher heating and hot water outputs. Worcester Bosch is the only company that produces a combi boiler of this kind.

MODEL	HIGHFLOW 440CDi	HIGHFLOW 550CDi
Hot water output	29.5kW	41.1kW
Hot water flow rate	20.0 ltr/min	25.0 ltr/min

All figures are maximums

- Larger two bathroom properties can be supplied by higher output options
- Wide choice of matching controls enables greater comfort and economy
- Frost protection and condensate pump reduces frost risk if installed in a garage or cellar.



See page 52 for technical and ERP information.



We always recommend you consult a qualified Gas Safe installer prior to choosing your boiler.  
Find your local Worcester Accredited Installer at [worcester-bosch.co.uk/FAI](http://worcester-bosch.co.uk/FAI)

Remote heating and hot water control made **Easy!**

The EasyControl, the new smart connected heating and hot water thermostat from Bosch makes everything easy and puts you in complete control.

Achieving the perfect heating environment has never been so easy – you can decide the times, temperatures and which rooms you want to heat, all from your smart device, wherever you are. Or, let the EasyControl take over, sensing your presence and anticipating your routines, saving energy when you're out and about, whilst ensuring your house is warm when you return.

See page 34 for further information on achieving an A+ rated system with Bosch EasyControl.





System boilers provide plenty of hot water to multiple taps at the same time and do not need any tanks in the loft.



## Greenstar system boilers

Greenstar system boilers are known for their high quality and reliability, making them robust enough to stand up to the highest of heating and hot water demands.

**Efficient and economical**

Ultra efficient and economical to run, Worcester Bosch system boilers incorporate many of the heating and hot water components found in a traditional heating system, making installation less disruptive and neater.

**Space saving and attractive**

The compact size of Greenstar i System boilers means that they can fit perfectly into many locations, with the 27kW and 30kW models even fitting into a standard kitchen cupboard. With a smart design, they'll also look great in your home, whether alongside cupboards or placed on their own.

**Perfect partners**

Worcester Bosch system boilers can be used with a wide choice of optional controls to maximise comfort and energy savings, and are also perfectly matched to our comprehensive range of Greenstore hot water cylinders. Choosing a complete Worcester Bosch system will ensure you will have a highly efficient solution and the opportunity to get a comprehensive guarantee across your entire system\*.

System boilers are also compatible with our Greenskies solar water heating systems, which can be installed at the same time as the boiler or easily retrofitted in the future to reduce your energy bills even further.

\* Terms and conditions apply.





See page 52 for technical and ERP information.

Greenstar CDi Classic System series

The wall-mounted Greenstar CDi Classic System series are high performance, high efficiency boilers that suit bigger homes with larger heating and hot water needs. They are compatible with a wide range of optional controls for even greater time and temperature setting flexibility as well as added energy savings.

MODEL	30CDi CLASSIC SYSTEM	35CDi CLASSIC SYSTEM
Central heating output	30.0kW	34.0kW

All figures are maximums

- ▶ Stored hot water can be rapidly replenished with high output options
- ▶ The CDi Classic has set the heating industry benchmark for efficiency, helping to reduce gas bills
- ▶ Low energy pump reduces electrical consumption
- ▶ Frost protection reduces frost risk if installed in a garage or loft
- ▶ Can be used with Worcester Bosch controls\* and Greenskies solar panels for energy and cost savings.

Greenstar i System (27kW and 30kW)

The 27kW and 30kW Greenstar i System boilers are a generation of smaller and lighter wall-mounted boilers. Suitable for small, medium and large homes they incorporate all the benefits of Greenstar i System series but offer higher heating output options to suit homes where demand is greater.

MODEL	27i SYSTEM	30i SYSTEM
Central heating output	27.0kW	30.0kW

All figures are maximums

- ▶ Can be installed in a kitchen cupboard
- ▶ User-friendly displays make boiler easy to operate
- ▶ High efficiency, greater reliability and durability is achieved by the innovative new heat exchanger
- ▶ Can be used with Worcester Bosch controls\* and Greenskies solar panels for energy and cost savings
- ▶ Frost protection included as standard.

Greenstar i System series

The ultra efficient Greenstar i System series are our most popular wall-mounted system boilers. They offer flexibility and can be installed in a number of locations.

MODEL	9i SYSTEM	12i SYSTEM	15i SYSTEM	18i SYSTEM	21i SYSTEM	24i SYSTEM
Central heating output	9.0kW	12.0kW	15.0kW	18.0kW	21.0kW	24.0kW

All figures are maximums

- ▶ Suitable for homes where the heating system includes a hot water storage cylinder
- ▶ All system components are neatly contained within the boiler
- ▶ Can be used with Worcester Bosch controls\* and Greenskies solar panels for energy and cost savings
- ▶ Simple to use control panel which provides information on the boiler operation and allows the temperature of the water in the radiators to be adjusted
- ▶ Frost protection included as standard.

\*All compatible controls must be used with an optional internal diverter valve.



We always recommend you consult a qualified Gas Safe installer prior to choosing your boiler.

Find your local Worcester Accredited Installer at [worcester-bosch.co.uk/FAI](http://worcester-bosch.co.uk/FAI)

Remote heating and hot water control made **Easy!**

The EasyControl, the new smart connected heating and hot water thermostat from Bosch makes everything easy and puts you in complete control.

Achieving the perfect heating environment has never been so easy – you can decide the times, temperatures and which rooms you want to heat, all from your smart device, wherever you are. Or, let the EasyControl take over, sensing your presence and anticipating your routines, saving energy when you’re out and about, whilst ensuring your house is warm when you return.

See page 34 for further information on achieving an A+ rated system with Bosch EasyControl.





Regular boilers meet all the heating demands of every size of home and are an ideal energy-efficient replacement for an existing boiler.



## Greenstar regular boilers

With quality and reliability at the heart of every Worcester Bosch regular boiler, they are robust enough to deliver efficient heating and hot water year after year.

### Modern efficiencies

With over 90% efficiency, Greenstar regular boilers will help reduce your energy bills and your carbon footprint. They can enhance heating and hot water performance in all sizes of homes, including those with two or more bathrooms, and where mains water pressure is low.

### Small in stature

The compact size and smart design of Greenstar regular boilers means that they will look great in any home, with several options readily fitting into a standard kitchen cupboard. Replacement installation is often simple and straightforward, which keeps costs down and disruption to a minimum.

Worcester Bosch regular boilers also perfectly meet the need for large hot water requirements. For example, two bathrooms can be comfortably used at once with no loss of pressure or temperature. They can also be combined to cater for high water demand in properties with three or more bathrooms. In this scenario, two boilers would work together to ensure a rapid re-supply of hot water despite the large volumes of water involved.

### Solar compatible

All of our regular boilers are compatible with our hot water Greenstore cylinders and our Greenskies solar water heating systems which can help to reduce your energy bills whilst also benefitting the environment.







See page 52 for technical and ERP information.

Greenstar CDi Classic Regular series

These top-performing, wall-mounted boilers have impressive heating outputs making them an excellent choice for larger properties.

MODEL	30CDi CLASSIC REGULAR	40CDi CLASSIC REGULAR
Central heating output	30.0kW	40.0kW

All figures are maximums

- ▶ Stored hot water can be rapidly replenished with high output options
- ▶ The CDi Classic has set the heating industry benchmark for efficiency, helping to reduce gas bills
- ▶ Frost protection included as standard.

Greenstar Ri (27kW and 30kW)

The higher output wall-mounted Greenstar Ri 27kW and 30kW boilers meet all the heating and hot water needs of medium to large properties, whilst their compact size makes them small enough to be installed in a standard kitchen cupboard.

MODEL	27Ri	30Ri
Central heating output	27.0kW	30.0kW

All figures are maximums

- ▶ Can be installed in a kitchen cupboard
- ▶ High efficiency, greater reliability and durability is achieved by the innovative new heat exchanger
- ▶ Compatible with a choice of Worcester Bosch controls\*.

Greenstar Ri series

These compact, wall-mounted boilers are small enough to be installed in a standard kitchen cupboard and are a great option for small and medium-sized homes.

MODEL	9Ri	12Ri	15Ri	18Ri	21Ri	24Ri
Central heating output	9.0kW	12.0kW	15.0kW	18.0kW	21kW	24.0kW

All figures are maximums

- ▶ Suitable for homes where the heating system includes a hot water storage cylinder
- ▶ Can be installed in a kitchen cupboard
- ▶ Frost protection is also included on the Ri reducing frost risk if installed in a garage or loft
- ▶ New outputs and compatibility with controls via a Greenstar Wiring Centre.

Greenstar FS CDi Regular series

The floor-standing Greenstar FS CDi Regular boiler series are a perfect replacement for older floor-standing boilers, offering high levels of heating comfort where a wall mounted boiler is not an option.

MODEL	FS 30CDi	FS 42CDi
Central heating output	30.0kW	40.8kW

All figures are maximums

- ▶ Stored hot water can be rapidly replenished with high output options
- ▶ Frost protection and condensate pump reduces frost risk if installed in a garage or cellar.

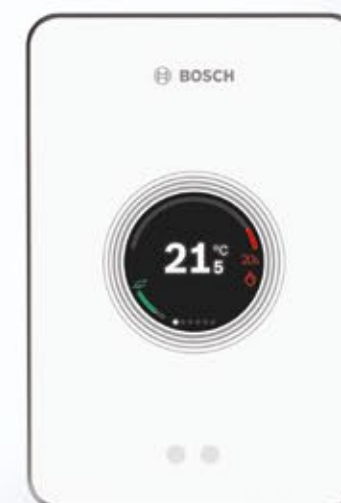
\* When installed with optional Greenstar Wiring Centre.



We always recommend you consult a qualified Gas Safe installer prior to choosing your boiler.

Find your local Worcester Accredited Installer at [worcester-bosch.co.uk/FAI](http://worcester-bosch.co.uk/FAI)

**Worcester Bosch keeps you in control**





## Boiler controls explained

Controls for a heating and hot water system typically include two main elements: a time clock or programmer and a room thermostat. Here we explain the different types that we offer and what they do. We also highlight what load and weather compensation mean – two key features of Worcester Bosch intelligent and smart controls.

### Room thermostats

A room thermostat monitors the air temperature and enables you to set the level you find comfortable. If the room temperature drops below this level, the thermostat switches your boiler on and if it gets too hot in the room, it turns your boiler off.

### Timers and programmers

A boiler timer is a basic device that allows you to set specific times for your central heating system to come on and turn off, with the same times typically repeated every day. A boiler programmer allows you to set your heating (and sometimes hot water) to switch on and off at different times, but it allows you to do it on different days, so your boiler best suits your lifestyle.

### Programmable room thermostats

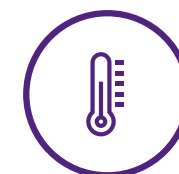
A programmable room thermostat is both a boiler programmer and a room thermostat; it allows you to set different room temperatures for different times of the day and night.

### Load compensation

The load compensation feature adjusts the temperature of the heat going to your radiators. When a room is cold the temperature will be high, but as the room warms up and less heat is needed, it lowers the temperature so that comfort is maintained but energy use is reduced.

### Weather compensation

The weather compensation feature also adjusts the temperature of the heat going to your radiators. However, it does so in keeping with the outside temperature. An outdoor sensor or an internet location post code search (Bosch Easy only) allows the control to monitor the weather, with the radiators running hotter if temperatures outside drop, ensuring a comfortable home.



For more information visit [youtube.com/WorcesterBoschGroup](https://youtube.com/WorcesterBoschGroup)





1



3

4

2



5

6

7



9

8

## Smart control

### 1 Bosch EasyControl

- Choose separate times and temperature from anywhere with your smart device
- With the EasyControl and Smart Thermostatic Radiator Valves (TRVs) you can easily control the heating in each individual room to give maximum comfort when and where you want it
- Uses the latest technology to automatically turn the heating down when you're not in the house, while turning the heating up ready for when you return
- Intelligently interacts with your boiler to provide load and weather compensation features
- Boosts the systems ErP rating by up to 5% when installed with 3 Smart TRVs.



## Intelligent wired controls

### 2 Sense I intelligent room thermostat

- Ideal to replace an existing, less energy efficient wired room thermostat
- Load compensation feature for increased efficiency.

### 3 Sense II weather compensation control

- Intelligently interacts with your boiler to provide weather compensation via a wired outdoor sensor
- Stylish design with clear back-lit display and touch sensitive buttons
- Service reminder function.



### 4 MS100 solar module

- Integrates Greenskies solar heating system with Sense II programmable room thermostat (solar performance is displayed via the Sense II control)
- Optimises the hot water system to ensure the maximum benefit is received from the solar hot water panels.

## Digital, wireless programmers and room thermostats

### 5 Greenstar Comfort plug-in programmer

- Simple menu navigation
- Heating programme visualisation bar
- Control heating and hot water 7 days a week.

### 6 Greenstar Comfort I RF wireless room thermostat and plug-in programmer

- All the features of the **Comfort** plus...
- A load compensating room thermostat for increased efficiency
  - Wireless – no wiring required
  - Extremely reliable Radio Frequency (RF) signal.



### 7 Greenstar Comfort II RF wireless programmable room thermostat

- All the features of the **Comfort** and **Comfort I** plus...
- 6 adjustable heating temperatures per day
  - All settings can be made from the room thermostat rather than on the boiler for maximum convenience
  - Back lit display.



## Mechanical timers

### 8 MT10 plug-in mechanical timer

- The simplest Worcester Bosch control device for setting heating start and stop times
- Analogue display.

### 9 MT10RF mechanical wireless thermostat

- Programmable room thermostat
- Set daily start and finish times for your heating as well as different temperatures
- Wireless system – no wiring required
- Simple installation
- Analogue display.

## Legal Requirements – Boiler Plus

From April 2018 all new boilers installed in England must have a both a thermostat and timer fitted to meet building control requirements.

If your boiler is a combi boiler you will need to also have one of 4 energy saving measures as a part of your system, you can find about which boiler system you're likely to need in our 'Find a boiler' online tool by visiting [worcester-bosch.co.uk/boiler-plus](http://worcester-bosch.co.uk/boiler-plus).

The most practical and inexpensive energy saving measures to meet this requirement include adding a control which has one of the below features: Load Compensation, Weather Compensation or Smart Thermostat optimisation and automation.

The controls which meet this requirement without the need for any other control are highlighted with the Boiler Plus logo above.



**To see which control is compatible with your preferred boiler, please see page 53.**



See – [youtube.com/WorcesterBoschGroup](https://youtube.com/WorcesterBoschGroup) – for more information

# Bosch EasyControl

The new smart-internet connected heating and hot water thermostat from Bosch gives you complete control via your smart phone.

### Zonal control

With the EasyControl and Smart TRVs you can easily control the heating in each individual room to give maximum comfort when and where you want it.

So, if you prefer sleeping at 17.5°C, but would like to step into a warm bathroom at 7am, simply set your desired temperature via the EasyControl app. An integrated sensor will continuously monitor the room temperature to keep it at your desired level. Several time-controlled settings are possible per day, and you can also set different times for every day of the week. After all, even early-risers stay in bed longer on Sundays!

### Home presence detection

You'll never need to worry about turning the heating down again when you leave home as the EasyControl can do it for you.

Using the latest technology, the thermostat automatically turns the heating down when you're not in the house, while turning the heating up to your desired temperature when you're returning home.

### Superior energy rating

The EasyControl boosts the heating system's ErP rating by 5% with a minimum of three Bosch Smart TRVs, or 4%\* without Smart TRVs, earning your overall system a better ErP energy classification and saving you money.

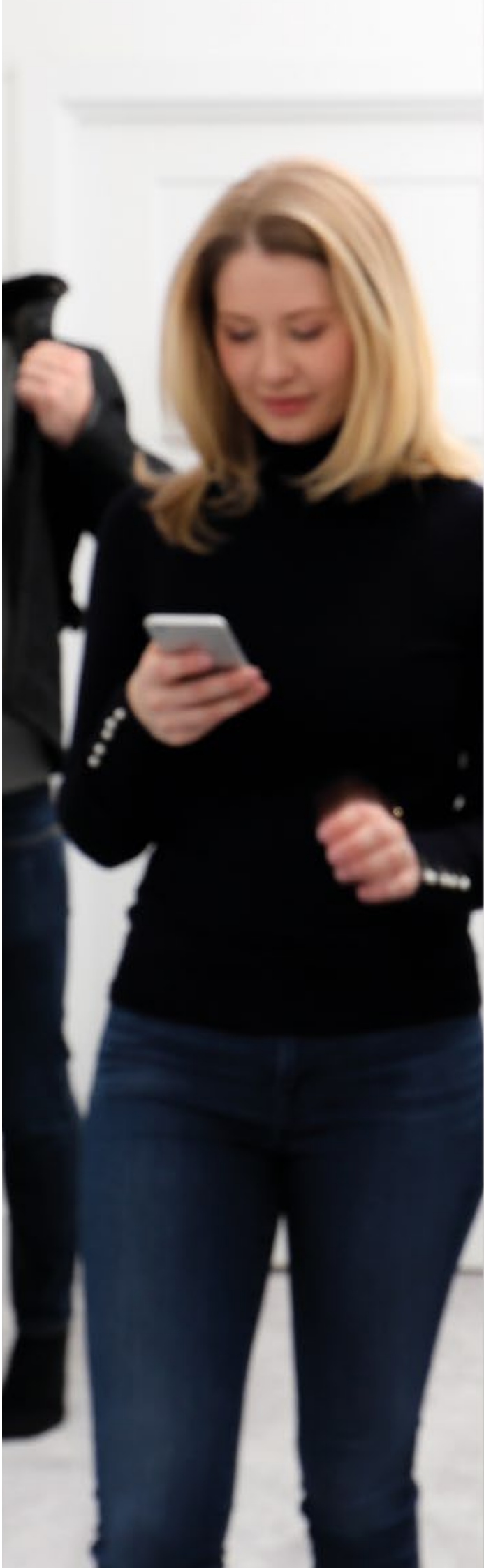


Bosch EasyControl with 3 x eTRVs



For more information, please visit [worcester-bosch.com/easy](http://worcester-bosch.com/easy)

\*With weather compensation enabled.







## Transforming hot water storage

When a system or regular boiler is installed, there will always be a requirement for a hot water cylinder. Hot water is provided by taking heat from the boiler and pumping it through the central heating system to the cylinder where the heat is transferred via the cylinder's heat exchange coils. This water is then stored ready to be passed through taps and showers when required.

Older, non-insulated cylinders tend to lose a considerable amount of heat and are likely to have a build-up of limescale, which reduces efficiency and makes water heat-up times longer. Even insulated cylinders over 10 years old lose more heat than modern ones.

Greenstore unvented cylinders have been designed to offer significant performance improvements over traditional cylinders. They combine rapid re-heat times with high heat retention and are guaranteed for 25 years\*. They also come in a wide range of capacities, from 90 to 300 litres, so you can be sure of a size that's exactly right for your home and lifestyle.

### Greenstore unvented cylinders: made for modern living

The Greenstore unvented cylinder range is a perfect complement for Greenstar regular or system boilers. Hot water is supplied at mains pressure for powerful showers and fast bath filling, and multiple taps can be used at the same time without the hot water running out. If your mains water pressure is low, you can still benefit from the high performance, fast re-heat times and energy savings of Greenstore cylinders. A trained Worcester Bosch installer will be able to provide solutions to increase your water performance if needed.

Super efficient cylinders can help lower your energy bills and carbon emissions. They are highly insulated to reduce heat loss and energy wastage.

### Greenstore unvented solar cylinders: the future-proof choice

Greenstore solar-compatible unvented cylinders are specifically designed to work with our Greenskies solar water heating systems. With all the same benefits as our standard unvented range, they enable you to add solar water heating to your system at a later date with no need to replace the cylinder. Available in five capacities, from 150 to 300 litres, they provide highly efficient storage for both boiler and solar-heated hot water.





# Protecting your investment

## Good water quality

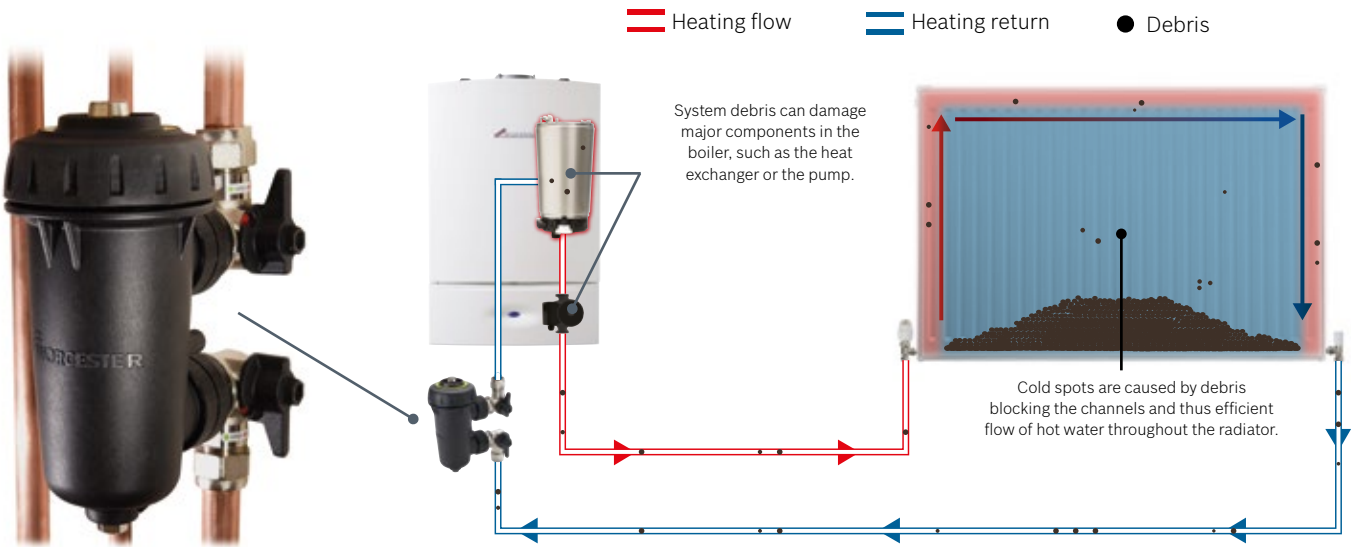
Over time, central heating system water accumulates harmful dirt and debris, such as rust and solder fragments shed by older radiators and boilers, as well as limescale deposits from mains water, all of which can cause considerable problems.

### Reduced efficiency

Condensing boilers are precision-engineered and designed to run with clean water in the system. When system water becomes contaminated it can quickly cause radiator blockages as well as damage to key components in the boiler and heating system. This leads to a loss of radiator heat, increased system noise and potentially failures. It also means a shorter life for the overall system and a dramatic reduction in the boiler's efficiency, which affects comfort and adds to your energy bills.

### A perfect safeguard

The Worcester Bosch Greenstar System Filter has been specifically designed to combat the damaging effects of system debris and pollutants by capturing contaminants before they reach your boiler. Using powerful and innovative magnet-based technology, it is instantly effective at protecting the performance of your heating and hot water system, ensuring a warm and quieter, blockage free system.



This image illustrates how debris in a system can build up in the bottom of radiators and block the efficient flow of water around the system, eventually affecting the radiator's heat distribution and your comfort.



See – [youtube.com/WorcesterBoschGroup](https://youtube.com/WorcesterBoschGroup) – for more information







## Keeping you warm

### Preventing frozen condensate pipework

With climate change and extreme weather variations becoming increasingly common, and very cold winters with temperatures as low as -20°C being experienced, Worcester Bosch has developed a unique solution for externally run condensate pipework.

#### Frozen boiler condensate pipes

All condensing boilers, regardless of manufacturer, will have a pipe fitted to carry away the condensed water that forms as a result of the normal condensing process. This is called the condensate pipe and is normally plastic.

When condensed water runs through this pipe it means your boiler is working perfectly normally and efficiently, and the more your boiler condenses the more condensate water it will produce.

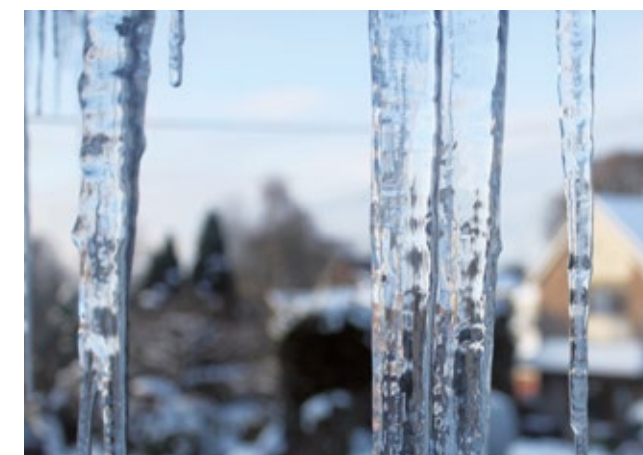
When a condensing boiler is in operation it can produce up to two litres of condensate every hour which needs to flow through this pipe.

#### A sure solution

The CondenseSure Auxiliary Siphon has been designed to allow a more flexible approach to boiler siting and enable condensate discharge pipes to be installed externally when an internal route is not practical. The large capacity of the CondenseSure Auxiliary Siphon increases condensate discharge volume, significantly reducing the risk of freezing. The CondenseSure has been extensively tested under simulated extreme weather conditions and proved its effectiveness in preventing frozen condensate at -15°C for a sustained period of 48 hours.



The CondenseSure clips onto the 22mm heating flow pipe allowing it to use free heat to raise the condensate temperature before it leaves your property.



Most of the latest Worcester Bosch boiler range feature the CondenseSure siphon within the boiler. Ask your installer if you're unsure.



See – [youtube.com/WorcesterBoschGroup](https://youtube.com/WorcesterBoschGroup) – for more information



## Expert advice and installation





## How can I get a Worcester Bosch boiler?

Modern heating systems can be complex and sophisticated, and because every home is slightly different we always recommend speaking to a qualified heating installer.

There are three straightforward ways to find local professional installers...



### The internet

You can do a general search for local Gas Safe registered installers on the internet. Some might have a showroom, giving you the opportunity to meet them first before you make a home visit appointment.

For your peace of mind, all Gas Safe registered installers carry a Gas Safe Register ID card, which you should ask to see when they arrive.



### Gas Safe registered installers

You can search for Gas Safe registered installers on the Gas Safe Register website at **gassaferegister.co.uk**. You can find local professionals by entering your postcode.

The website also allows you to check individuals and companies to see if they are registered and includes information on what Gas Safe registered engineers are, why it's important to use them and how to check their ID card.



### Worcester Accredited Installers

Worcester Accredited Installers are installation companies that we consider to be reputable, quality-conscious and provide value for money. They must have attended our training courses and hold all the required approvals for carrying out work at your home, such as Gas Safe accreditation, before we list them.

As well as installing and providing servicing, some also offer extended guarantees on our products.

To find a local Worcester Accredited Installer simply go to the 'Find an Installer' page at **worcester-bosch.co.uk** and enter your postcode.



For more information on how to find the boiler best for you visit [worcester-bosch.co.uk/FindANewBoiler](http://worcester-bosch.co.uk/FindANewBoiler)







# Selecting your boiler

To help you choose the best boiler for your property and lifestyle we have developed two simple online tools that can be accessed at **worcester-bosch.co.uk**.

## Find a new boiler

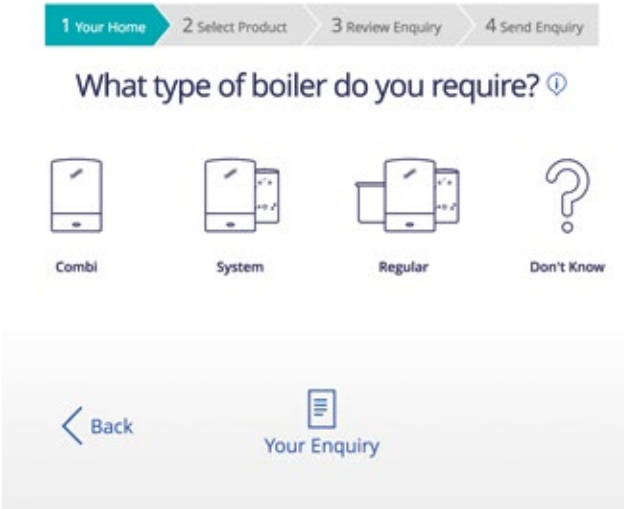
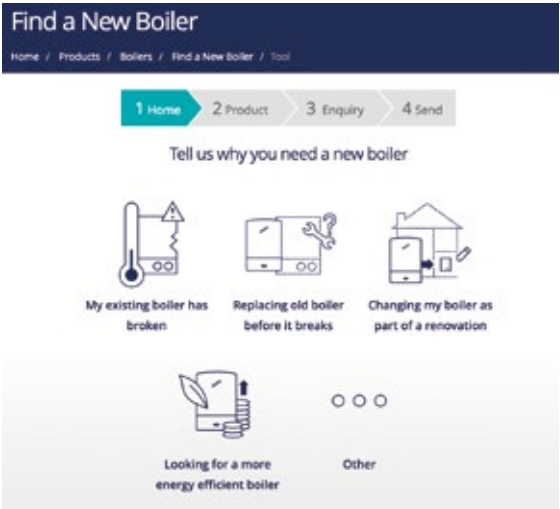
If you know the make and model of your current boiler you can use our online boiler replacement tool to find the latest Worcester Bosch equivalent boiler.

You can then use our “Find an Installer” tool to send an enquiry to up to 5 Worcester Bosch Accredited Installers in your area who will provide you with a free quotation to replace your boiler. They will also check that the boiler you have selected is the correct one for your property and lifestyle, as your heating needs can change over time, such as if you have had an extension.

## Boiler replacement tool

This tool will ask you to answer a few questions including your type of property, the number of bathrooms as well as bedrooms and the proposed location of the boiler.

At the end you will be shown a selection of recommended boilers and compatible control and accessories can be selected. Then you are ready to go ahead and get a free installation quotation. Just type in your postcode to show all the Worcester Bosch Accredited Installers in your area including which of them offer finance. You can then select up to 5 installers to send your enquiry to.







## Supporting you from the start

When you choose Worcester Bosch, you'll be in the company of millions of people across the UK who value the quality, reliability and comfort of our boilers.



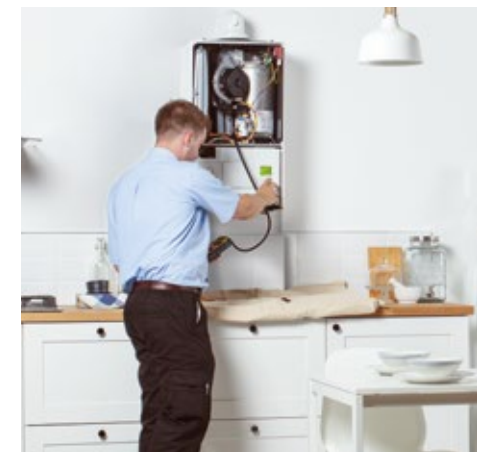
### Our guarantee

Every one of our products is manufactured to the highest quality standards and undergoes stringent and continuous testing.

We want you to have the same confidence in our boilers as we do, which is why they come with a full parts and labour guarantee including a 10 year guarantee\* on the primary heat exchanger – the heart of the boiler. We also guarantee the boiler as a whole for a minimum of 5 years as standard\*.

The important task of registering your new Greenstar boiler will typically be carried out by your installer. If you have a query please call 0330 123 2552.

**Please note your guarantee length can vary between installers and the accessories your installer has fitted.**



### Service and support

Whether you are thinking about buying a Greenstar boiler or you've owned one for a long time, we are always here to help.

Our award-winning support team can advise you on any aspect of your boiler. Friendly and knowledgeable, they'll give you all the help you need, from choosing the right controls to technical queries, such as combining your boiler with renewable systems like solar water heating. We also have over 300 service engineers working across the country to ensure that our products always deliver high performance year after year.



For help and advice on any of your Worcester Bosch products simply visit [worcester-bosch.co.uk/product-support](http://worcester-bosch.co.uk/product-support)



## Other products from Bosch

### Greenstar oil-fired boilers

Our energy-efficient Greenstar oil-fired boilers have all the benefits of our gas-fired range. Available as combi, system or regular boilers, they are at least 90% efficient, with options for installation inside or outside your home.

All Greenstar oil-fired system and regular boilers are compatible with our Greenstore unvented cylinders, and are compatible for use with Greenskies solar water heating systems.

See more at [worcester-bosch.co.uk](http://worcester-bosch.co.uk)



### White goods

Bosch appliances are built with precision German engineering to deliver quality and efficient performance. From large home appliances such as washing machines and ovens to small appliances from kettles to vacuum cleaners, Bosch has consistently been recognised for the highest levels of quality and reliability and has received the prestigious award of Which? Small Home Appliance Brand of the year 2018.

See more at [bosch-home.co.uk](http://bosch-home.co.uk)



### Lawn and garden

Bosch is market leader within the garden power sector bringing new products to ensure gardening is made easier and more efficient. Most well-known for the reliable Rotak lawnmowers in both the corded and cordless segment, but with a huge product portfolio spanning tree care, plant care and grass care, we have the product you need for a fantastic garden. The Royal Horticultural Society voted the EasyPrune Power-assisted Secateurs a finalist for the awards in 2018 due to the high level of innovation and ease of use.

See more at [bosch-garden.com](http://bosch-garden.com)



### Power tools

Bosch is market leader within the DIY power tools sector bringing constant innovation and new ergonomic designs to our product portfolio.

From the best-selling power tool in Europe in the IXO, to the 18V interchangeable battery range, making DIY easier is at the core of everything we do. The 'DIY Week' awards voted the EasyCut 12 NanoBlade Saw, Winner for the 'Power Tool of the Year' category, showing yet again why Bosch is the brand of choice.

See more at [bosch-do-it.com](http://bosch-do-it.com)





These handy comparison tables list some key technical information about our products

	WALL HUNG	FLOOR STANDING	HEIGHT (MM)	WIDTH (MM)	DEPTH (MM)	ERP – SEASONAL SPACE HEATING ENERGY EFFICIENCY CLASS	ERP – WATER HEATING ENERGY EFFICIENCY CLASS	SEDBUK 2009 (%) NATURAL GAS	SEDBUK 2009 (%) LPG	DOMESTIC HOT WATER FLOW RATE @ 35°C ΔT* (LITRES PER MIN)	CENTRAL HEATING OUTPUT (kW)
COMBI BOILERS											
29CDi CLASSIC	✓		760	440	360	A	A	89.1	90.1	12.3	7.7-30.0
34CDi CLASSIC	✓		760	440	360	A	A	89.1	90.1	14.3	7.7-30.0
38CDi CLASSIC	✓		760	440	360	A	A	89.0	90.0	16.4	9.4-30.0
42CDi CLASSIC	✓		760	440	360	A	A	89.4	90.4	17.2	9.4-30.0
28CDi COMPACT	✓		690	390	280	A	A	89.8	90.9	11.4	7.03-24.0
32CDi COMPACT	✓		690	390	280	A	A	89.8	90.9	13.1	7.03-24.0
36CDi COMPACT	✓		690	390	280	A	A	89.8	90.9	15	7.03-24.0
25Si COMPACT	✓		690	390	280	A	A	89.8	90.9	10.2	7.03-24.0
30Si COMPACT	✓		690	390	280	A	A	89.8	90.9	12.3	7.03-24.0
25i	✓		710	400	330	A	A	89.6	90.6	10.2	8.2-24.0
30i	✓		710	400	330	A	A	89.6	90.9	12.3	8.2-24.0
HIGHFLOW 440CDi		✓	850	600	600	A	B	89.2	90.2	20	7.4-29.2
HIGHFLOW 550CDi		✓	850	600	600	A	B	89.2	90.2	25	9.7-30.6
SYSTEM BOILERS											
30CDi CLASSIC SYSTEM	✓		760	440	360	A	N/A	89.2	90.2	N/A	7.7-30.0
35CDi CLASSIC SYSTEM	✓		760	440	360	A	N/A	89.2	90.2	N/A	7.7-34.0
9i SYSTEM	✓		710	400	330	A	N/A	89.8	90.9	N/A	3.1-9.2
12i SYSTEM	✓		710	400	330	A	N/A	89.8	90.9	N/A	3.1-12.2
15i SYSTEM	✓		710	400	330	A	N/A	89.7	90.7	N/A	4.6-15.3
18i SYSTEM	✓		710	400	330	A	N/A	89.7	90.7	N/A	4.6-18.4
21i SYSTEM	✓		710	400	330	A	N/A	89.7	90.7	N/A	7.2-21.6
24i SYSTEM	✓		710	400	330	A	N/A	89.7	90.7	N/A	7.2-24.6
27i SYSTEM	✓		690	390	280	A	N/A	89.0	90.0	N/A	7.03-27.0
30i SYSTEM	✓		690	390	280	A	N/A	89.0	90.9	N/A	7.03-30.0
REGULAR BOILERS											
30CDi CLASSIC REGULAR	✓		760	440	360	A	N/A	89.2	90.2	N/A	7.7-30.0
40CDi CLASSIC REGULAR	✓		760	440	360	A	N/A	89.2	90.2	N/A	9.4-40.8
9Ri	✓		600	390	270	A	N/A	89.1	89.0	N/A	3.45-9.0
12Ri	✓		600	390	270	A	N/A	89.1	89.0	N/A	3.45-12.0
15Ri	✓		600	390	270	A	N/A	88.9	89.1	N/A	4.62-15.0
18Ri	✓		600	390	270	A	N/A	88.9	89.2	N/A	5.54-18.0
21Ri	✓		600	390	270	A	N/A	88.7	88.9	N/A	7.38-21.0
24Ri	✓		600	390	270	A	N/A	88.7	88.9	N/A	7.38-24.0
27Ri	✓		600	390	270	A	N/A	89.0	90.0	N/A	7.03-27.0
30Ri	✓		600	390	270	A	N/A	89.0	90.0	N/A	7.03-30.0
FS 30CDi REGULAR		✓	850	400	600	A	N/A	88.9	89.9	N/A	7.7-30.0
FS 42CDi REGULAR		✓	850	400	600	A	N/A	88.8	89.9	N/A	9.6-40.8

\* Boiler flow rates limited by regulators to give 40°C ΔT. Minimum operating pressure required.

Greenstar boiler controls compatibility\*

	COMBINATION					SYSTEM*			REGULAR^	
	CDi CLASSIC	CDi COMPACT	Si COMPACT	i	HIGHFLOW CDi	CDi CLASSIC SYSTEM	i SYSTEM	i SYSTEM (27 & 30kW)	Ri	Ri (27 & 30kW)
MT10	✓	✓	✓	✓						
MT10RF	✓	✓	✓	✓						
COMFORT	✓	✓	✓	✓	✓	✓	✓	✓		
COMFORT I	✓	✓	✓	✓	✓	✓	✓	✓	✓	✓
COMFORT II	✓	✓	✓	✓	✓	✓	✓	✓	✓	✓
SENSE I**	✓	✓	✓	✓	✓	✓	✓	✓		
SENSE II	✓	✓	✓	✓	✓	✓	✓	✓		
MS100 SOLAR MODULE						✓	✓	✓		
BOSCH EASYCONTROL	✓	✓	✓	✓	✓	✓	✓	✓		
WIRING CENTRE									✓	✓

\*All compatible controls must be used with optional internal diverter valve. ^Controls only compatible with Ri, 27Ri and 30Ri models via a Worcester Bosch Greenstar Wiring Centre.  
\*Please note this table does not apply when retrofitting a control. Please speak to your installer. \*\*Must be used with proprietary 230V timer.

Greenstore cylinder technical information

	GREENSTORE UNVENTED CYLINDERS						
	GREENSTORE SC-90	GREENSTORE SC-120	GREENSTORE SC-150	GREENSTORE SC-180	GREENSTORE SC-210	GREENSTORE SC-250	GREENSTORE SC-300
HEIGHT	835mm	1,024mm	1,275mm	1,479mm	1,654mm	1,849mm	2,144mm
DIAMETER	570mm	570mm	570mm	570mm	570mm	570mm	570mm
WEIGHT – DRY	26kg	34kg	39kg	44kg	48kg	52kg	59kg
VOLUME DOMESTIC HOT WATER	93 litres	123 litres	161 litres	191 litres	216 litres	246 litres	292 litres
STANDING HEAT LOSS – 24HR	1.008kWh/24hrs	0.968kWh/24hrs	1.200kWh/24hrs	1.368kWh/24hrs	1.496kWh/24hrs	1.637kWh/24hrs	1.824kWh/24hrs
ERP ENERGY EFFICIENCY CLASS/STANDING HEAT LOSS	B / 42W	B / 40W	B / 50W	B / 57W	B / 62W	C / 68W	C / 76W

	GREENSTORE SOLAR COMPATIBLE UNVENTED CYLINDERS				
	GREENSTORE TC-150	GREENSTORE TC-180	GREENSTORE TC-210	GREENSTORE TC-250	GREENSTORE TC-300
HEIGHT	1,285mm	1,479mm	1,654mm	1,849mm	2,144mm
DIAMETER	570mm	570mm	570mm	570mm	570mm
WEIGHT – DRY	41kg	49kg	53kg	57kg	64kg
VOLUME DOMESTIC HOT WATER	157 litres	187 litres	211 litres	241 litres	287 litres
DEDICATED SOLAR VOLUME	65 litres	65 litres	105 litres	115 litres	115 litres
STANDING HEAT LOSS – 24HR	1.632kWh/24hrs	1.368kWh/24hrs	1.496kWh/24hrs	1.637kWh/24hrs	1.824kWh/24hrs
ERP ENERGY EFFICIENCY CLASS/STANDING HEAT LOSS	C / 68W	B / 57W	B / 62W	C / 68W	C / 76W



We always recommend you consult a qualified Gas Safe installer prior to choosing your boiler.

Notes

Notes



# Useful numbers

## **Consumer Technical Helpline (Pre & Post Sales)**

Tel: 0330 123 3366

Email: [technical-advice@uk.bosch.com](mailto:technical-advice@uk.bosch.com)

## Customer Service

### **Service Enquiries**

Email: [service-enquiries@uk.bosch.com](mailto:service-enquiries@uk.bosch.com)  
or telephone 0330 123 9559

### **Guarantee Registration**

Your installer should always undertake the registration of your boiler on your behalf.  
If you have a query please call 0330 123 2552

# Share

We would love to see your new boiler and heating system.



@HeatingYourHome



Worcester Bosch UK



@WorcesterBosch



Worcester Bosch Group

## **Worcester Bosch**

Cotswold Way  
Warndon  
Worcester  
WR4 9SW

**[worcester-bosch.co.uk](http://worcester-bosch.co.uk)**

Calls to and from Bosch Thermotechnology Ltd may be recorded for training and quality assurance purposes. Worcester Bosch is a brand name of Bosch Thermotechnology Ltd. This brochure is accurate at the date of printing, but may be superseded and should be disregarded if specification and/or appearances are changed in the interest of continued improvement. The statutory rights of the consumer are not affected.



8 716 109 642 R 04/19



By Appointment to  
Her Majesty The Queen  
Boiler Manufacturer  
Worcester, Bosch Group  
T/A Bosch Thermotechnology Ltd.  
Worcester